

VORTAC OVR <b>116.3</b> Chan <b>110</b>	APP CRS <b>142°</b>	Rwy ldg TDZE Apt Elev	<b>3439</b> <b>964</b> <b>971</b>
---	------------------------	-----------------------------	---

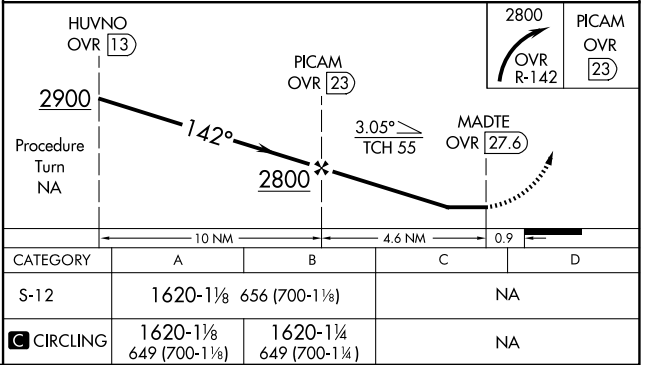
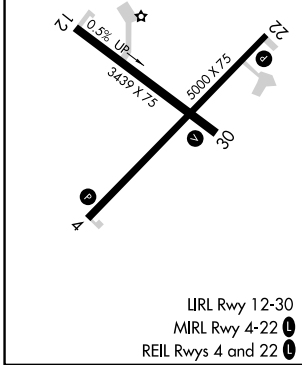
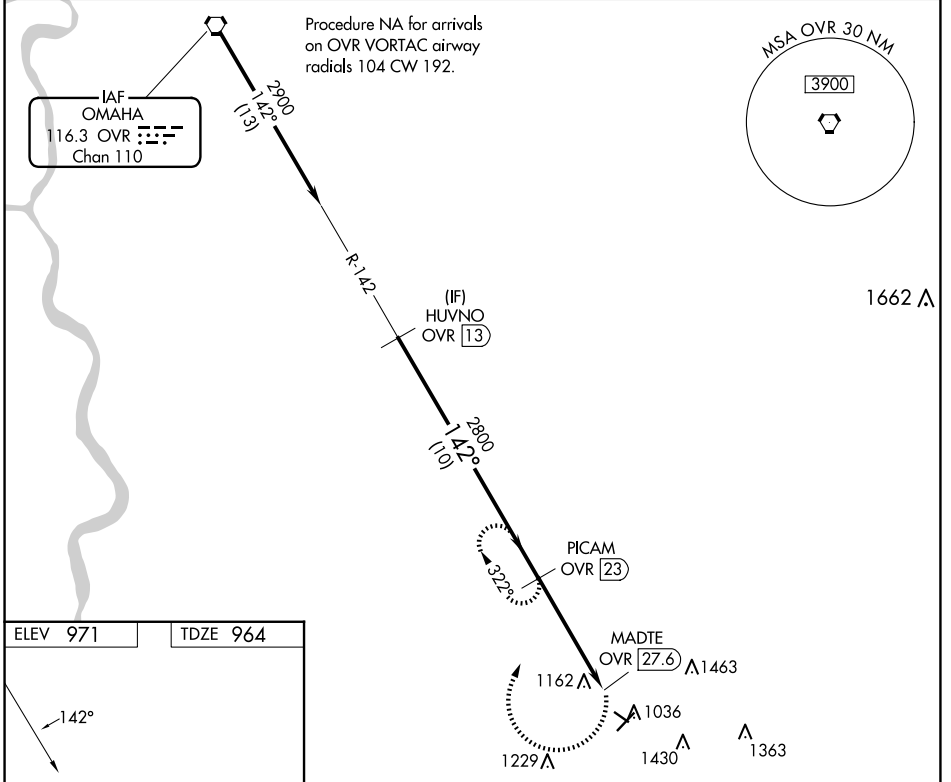
# VOR/DME RWY 12

SHENANDOAH MUNI (SDA)

**⚠** Rwy 12 helicopter visibility reduction below 3/4 SM NA. When local altimeter setting not received, use Clarinda altimeter setting and increase all MDA 60 feet. Circling Rwy 30 NA at night.

MISSED APPROACH: Climbing right turn to 2800 on OVR VORTAC R-142 to PICAM/OVR 23 DME and hold.

AWOS-3 <b>125.525</b>	OMAHA APP CON <b>124.5 263.0</b>	UNICOM <b>122.8</b> (CTAF) <b>0</b>
--------------------------	-------------------------------------	--



NC-3, 23 JAN 2025 to 20 FEB 2025

NC-3, 23 JAN 2025 to 20 FEB 2025