

ARSENAL FIVE DEPARTURE
(ARSNL5.CSN) 21JUL16

MANASSAS RGNL/HARRY P DAVIS FLD (HEIF)
WASHINGTON, D.C.

ATIS
125.175
POTOMAC CLNC DEL
120.2
GND CON
121.8
MANASSAS TOWER *
133.1 (CTAF) 360.75
POTOMAC DEP CON
128.525 306.925

MARTINSBURG
112.1 MRB
Chan 58

LINDEN
114.3 LDN
Chan 90

CASANOVA
116.3 CSN
Chan 110
3000

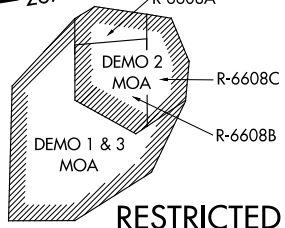
MONTEBELLO
115.3 MOL
Chan 100

GORDONSVILLE
115.6 GVE
Chan 103

ARMEL
113.5 AML
Chan 82

TOP ALTITUDE:
3000

TAKEOFF MINIMUMS:
Rwy 16L/R: Standard with ATC climb
of 400' per NM to 800.

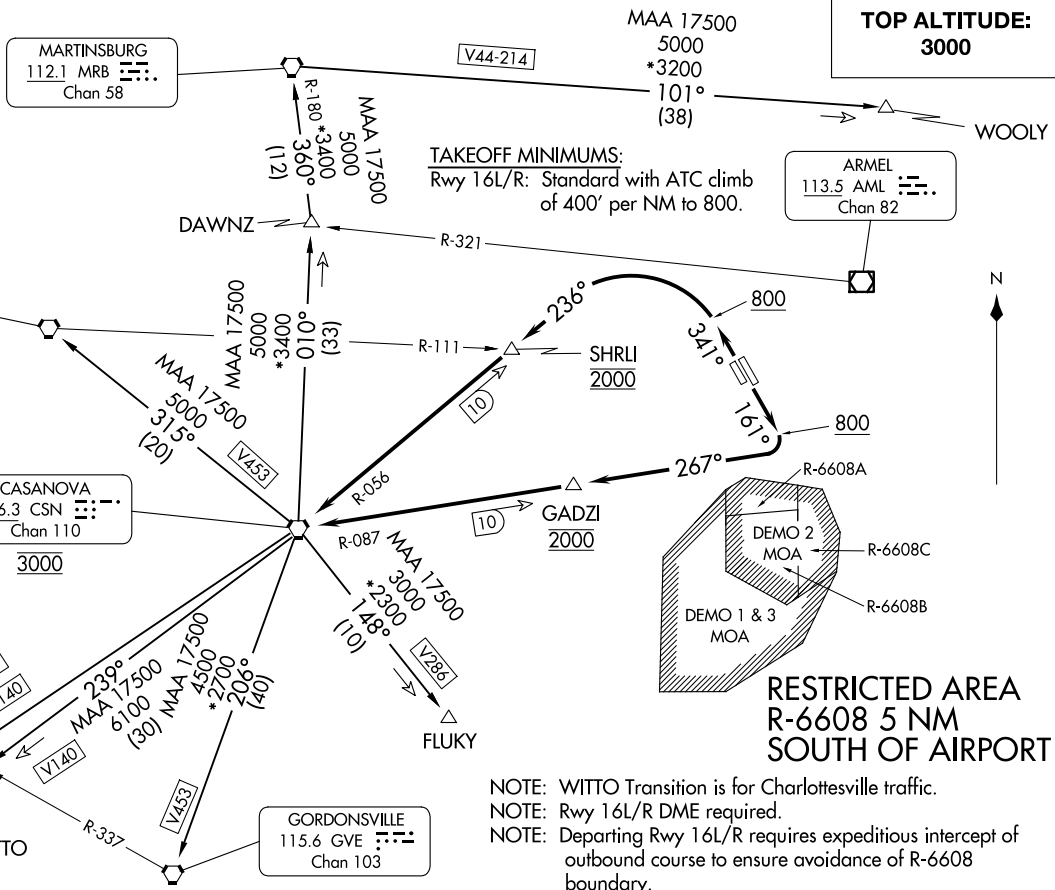


RESTRICTED AREA
R-6608 5 NM
SOUTH OF AIRPORT

- NOTE: WITTO Transition is for Charlottesville traffic.
- NOTE: Rwy 16L/R DME required.
- NOTE: Departing Rwy 16L/R requires expeditious intercept of outbound course to ensure avoidance of R-6608 boundary.

(NARRATIVE ON FOLLOWING PAGE)

NOTE: Chart not to scale.



ARSENAL FIVE DEPARTURE
(ARSNL5.CSN) 23334

MANASSAS RGNL/HARRY P DAVIS FLD (HEIF)
WASHINGTON, D.C.
AL-5326 (FAA)



DEPARTURE ROUTE DESCRIPTION

TAKEOFF RWY 34L/R: Climb heading 341° to 800, then climbing left turn on CSN VORTAC R-056. Cross SHRLI INT/CSN 10 DME at 2000, cross CSN VORTAC at 3000. Thence....

TAKEOFF RWY 16L/R: Climb heading 161° to 800, then climbing right turn on CSN VORTAC R-087, cross GADZI/CSN 10 DME at 2000, cross CSN VORTAC at 3000. Thence....

....via assigned transition.

FLUKY TRANSITION (ARSNL5.FLUKY): From over CSN VORTAC on CSN R-148 to FLUKY INT.

GORDONSVILLE TRANSITION (ARSNL5.GVE): From over CSN VORTAC on CSN R-206 to GVE VORTAC.

LINDEN TRANSITION (ARSNL5.LDN): From over CSN VORTAC on CSN R-315 to LDN VORTAC.

MARTINSBURG TRANSITION (ARSNL5.MRB): From over CSN VORTAC on CSN R-010 to DAWNZ INT, then on MRB R-180 to MRB VORTAC.

MONTEBELLO TRANSITION (ARSNL5.MOL): From over CSN VORTAC on CSN R-239 and MOL R-058 to MOL VOR/DME.

WITTO TRANSITION (ARSNL5.WITTO): From over CSN VORTAC on CSN R-239 to WITTO INT.

WOOLY TRANSITION (ARSNL5.WOOLY): From over CSN VORTAC on CSN R-010 to DAWNZ INT, then on MRB R-180 to MRB VORTAC, then on MRB R-101 to WOOLY INT.

NE-3, 23 JAN 2025 to 20 FEB 2025

NE-3, 23 JAN 2025 to 20 FEB 2025