

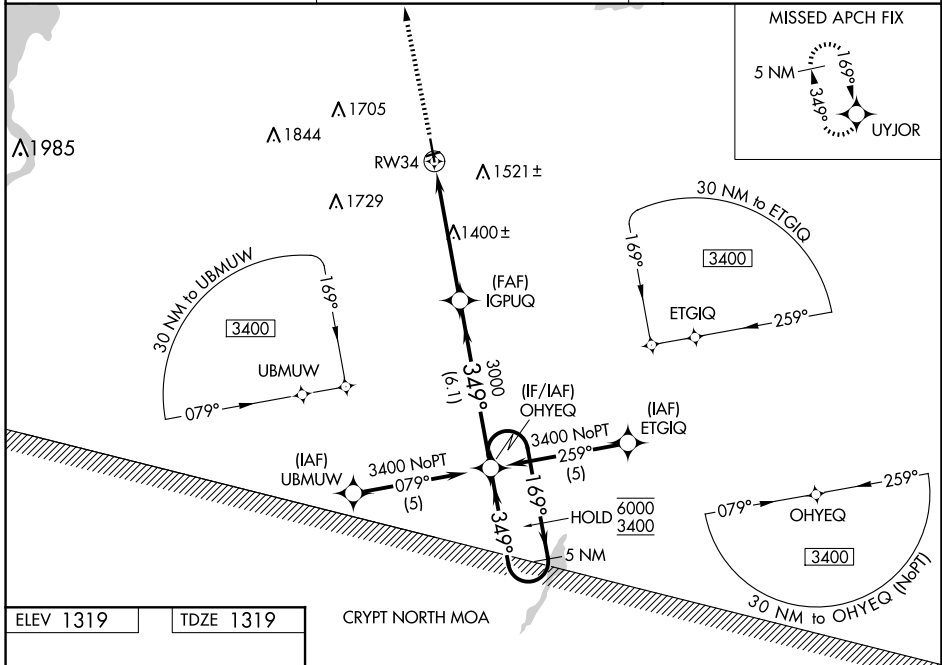
WAAS CH <b>82304</b> <b>W34A</b>	APP CRS <b>349°</b>	Rwy Idg <b>4797</b> TDZE <b>1319</b> Apt Elev <b>1319</b>
--	------------------------	---

# RNAV (GPS) RWY 34

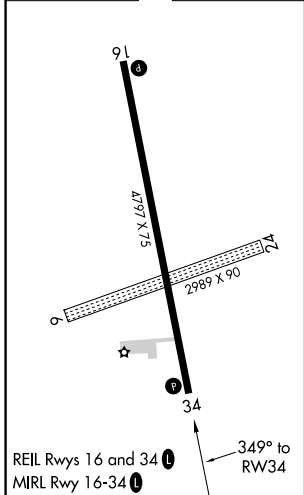
ESTHERVILLE MUNI (EST)

RNP APCH.	<p><b>⚠</b> Circling NA to Rwy 6 and 24. Baro-VNAV and VDP NA when using Jackson altimeter setting. For uncompensated Baro-VNAV systems, LNAV/VNAV NA below -17°C or above 54°C. When local altimeter not received, use Jackson altimeter setting and increase all DA/MDA 60 feet.</p>	MISSED APPROACH: Climb to 3400 direct UYJOR and hold.
-----------	--	---

ASOS <b>121.425</b>	MINNEAPOLIS CENTER <b>127.75 257.7</b>	UNICOM <b>122.975 (CTAF)</b> <b>0</b>
------------------------	---	--



ELEV 1319	TDZE 1319
-----------	-----------



3400 UYJOR	VGS1 and RNAV glidepath not coincident (VGS1 Angle 3.00/TCH 39).		OHYEQ 5 NM Holding Pattern	
*LNAV only	IGPUQ 3000	349°	6000 / 3400	
RW34	*1.1 NM to RW34	3000	GP 3.00° TCH 42	
1.1 NM	4 NM	6.1 NM		
CATEGORY	A	B	C	D
LPV DA	1569-1	250 (300-1)		NA
LNAV/VNAV DA	1629-1	310 (400-1)		NA
LNAV MDA	1700-1	381 (400-1)		NA
<b>C</b> CIRCLING	1720-1 401 (500-1)	1840-1 521 (600-1)		NA

NC-3, 23 JAN 2025 to 20 FEB 2025

NC-3, 23 JAN 2025 to 20 FEB 2025