

WAAS CH 57905 W10A	APP CRS 103°	Rwy Idg 5001 TDZE 308 Apt Elev 310
--	------------------------	---

RNAV (GPS) RWY 10

CRISP COUNTY-CORDELE (CKF)

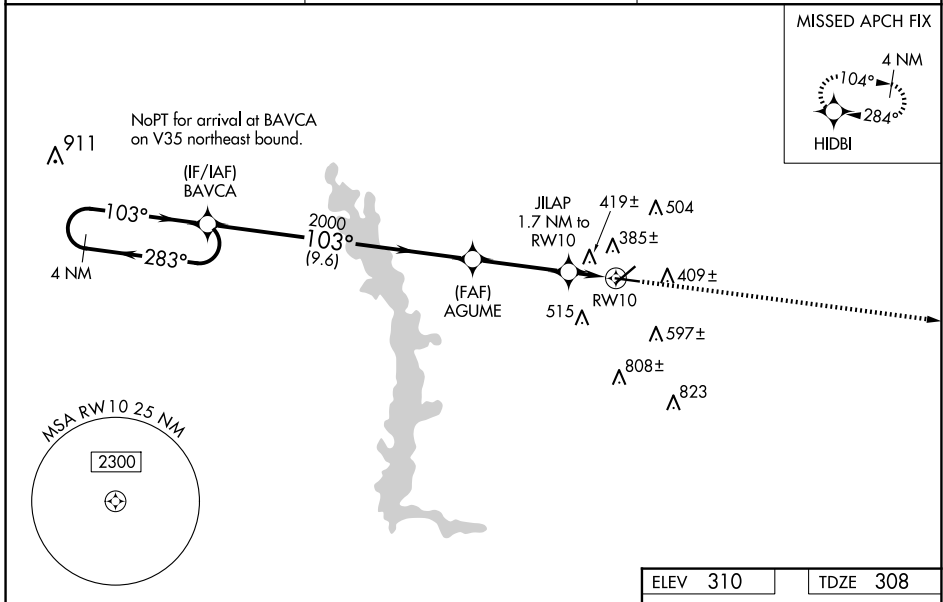
RNP APCH-GPS.

▼ For uncompensated Baro-VNAV systems, LNAV/VNAV
 ▲ NA below -15°C or above 54°C. Rwy 10 helicopter
 visibility reduction below 3/4 SM NA. Circling Rwy 28
 NA at night. Inop table does not apply to LPV and LNAV
 all Cats. For inop ALS, increase LNAV/VNAV Cat A/B
 visibility to 1 1/2 SM.

ODALS

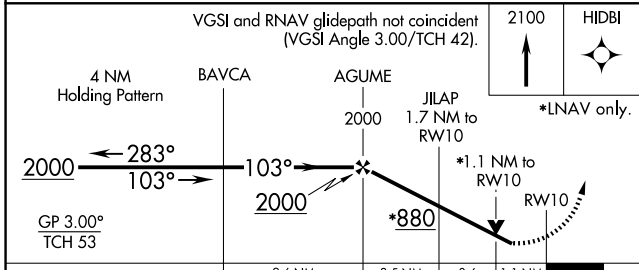
MISSED APPROACH: Climb to 2100 direct HIDBI and hold.

AWOS-3PT 119.325	JACKSONVILLE CENTER 125.75 363.075	UNICOM 123.050 (CTAF) 📻
----------------------------	--	--



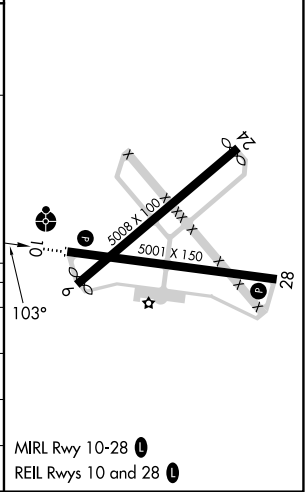
SE-4, 23 JAN 2025 to 20 FEB 2025

SE-4, 23 JAN 2025 to 20 FEB 2025



ELEV 310	TDZE 308
----------	----------

CATEGORY	A	B	C	D
LPV DA		612-1	304 (400-1)	
LNAV/ VNAV DA		726-1 1/4	418 (300-1 1/4)	
LNAV MDA		680-1	372 (400-1)	
C CIRCLING	820-1	510 (600-1)	1080-2 1/4 770 (800-2 1/4)	1160-2 3/4 850 (900-2 3/4)



MIRL Rwy 10-28 **📻**
 REIL Rwy 10 and 28 **📻**