


| | | | |
|--|------------------------|---|-------------|
| WAAS CH 93824 W04A | APP CRS 043° | Rwy Idg TDZE 253 Apt Elev 257 | 6000 |
|--|------------------------|---|-------------|

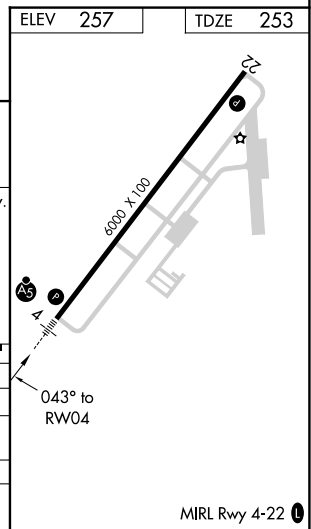
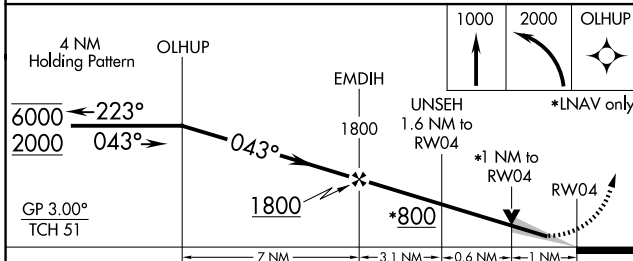
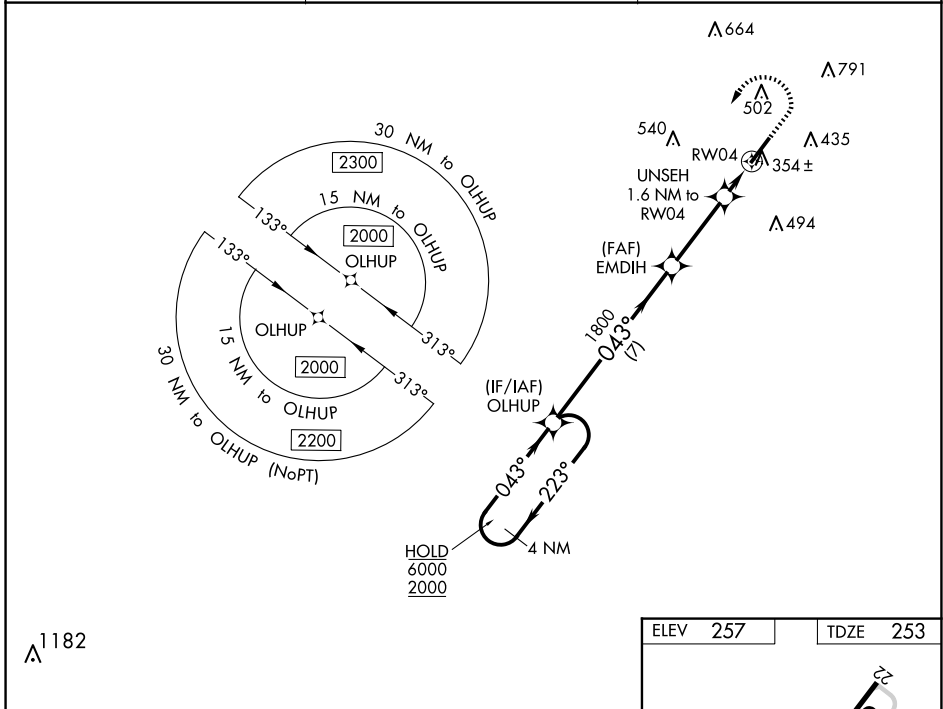
RNAV (GPS) RWY 4

DOUGLAS MUNI (DQH)

RNP APCH.
 ▼ For uncompensated Baro-VNAV systems, LNAV/VNAV NA below -15°C or above 54°C. For inop ALS increase LNAV/VNAV all Cats visibility to 7/8 SM and LNAV Cat C and D visibility to 1 SM.

MALSR

 MISSED APPROACH: Climb to 1000 then climbing left turn to 2000 direct OLHUP and hold.

| | | |
|--------------------------|---|---------------------------------|
| AWOS-3 119.075 | JACKSONVILLE CENTER 127.575 269.025 | UNICOM 122.8 (CTAF) 0 |
|--------------------------|---|---------------------------------|



| CATEGORY | A | B | C | D |
|--------------|-------------|---------------|---------------|---------------|
| LPV DA | | 453-1/2 | 200 (200-1/2) | |
| LNAV/VNAV DA | | 538-1/2 | 285 (300-1/2) | |
| LNAV MDA | 620-1/2 | 367 (400-1/2) | 620-5/8 | 367 (400-5/8) |
| CIRCLING | 720-1 | 820-1 | 960-2 | 1160-3 |
| | 463 (500-1) | 563 (600-1) | 703 (800-2) | 903 (1000-3) |

SE-4, 23 JAN 2025 to 20 FEB 2025

SE-4, 23 JAN 2025 to 20 FEB 2025