

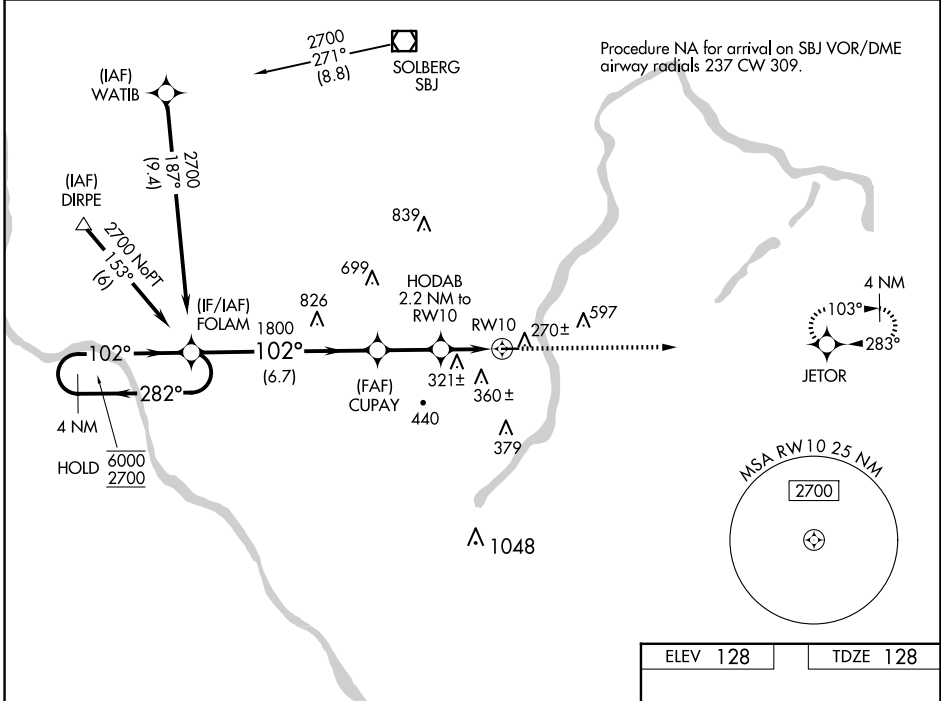
WAAS CH 86843 W10A	APP CRS 102°	Rwy Idg TDZE 128 Apt Elev 128	3499
--	------------------------	---	-------------

RNAV (GPS) RWY 10

PRINCETON (39N)

RNP APCH - GPS.		MISSED APPROACH: Climb to 2700 direct JETOR and hold.
<p>▼ Rwy 10 helicopter visibility reduction below 3/4 SM NA. Circling Rwy 28 NA at night.</p> <p>▲ NA Baro-VNAV NA. Use Trenton altimeter setting.</p>		

TTN ASOS 126.775	NEWARK APP CON 132.8 379.9	UNICOM 122.725 (CTAF)	123.05 0
----------------------------	--------------------------------------	---------------------------------	-----------------



NE-2, 23 JAN 2025 to 20 FEB 2025

NE-2, 23 JAN 2025 to 20 FEB 2025

4 NM Holding Pattern		VGSi and descent angles not coincident (VGSi Angle 3.45/TCH 42).		2700	JETOR
<p>6000 ← 282°</p> <p>2700 → 102°</p> <p>GP 3.45° TCH 51</p>		FOLAM	CUPAY 1800	HODAB 2.2 NM to RW10	*LNAV only.
<p>102°</p> <p>1800</p> <p>*960</p> <p>RW10</p>		<p>6.7 NM 2.3 NM 2.2 NM</p>			
CATEGORY	A	B	C	D	
LPV DA	441-1		313 (400-1)		
LNAV/VNAV DA	533-1 1/8		405 (500-1 1/8)		
LNAV MDA	580-1	452 (500-1)	580-1 3/8	452 (500-1 3/8)	
CIRCLING	760-1 632 (700-1)	840-1 712 (800-1)	940-2 1/2 812 (900-2 1/2)	1000-2 3/4 872 (900-2 3/4)	
					MIRL Rwy 10-28 0
					REIL Rwy 10 0