

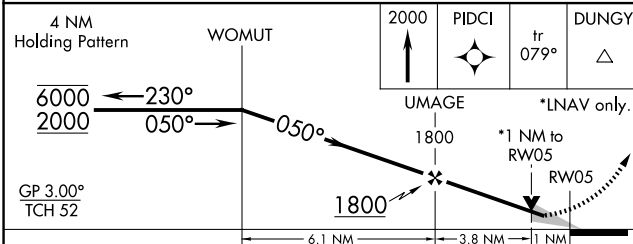
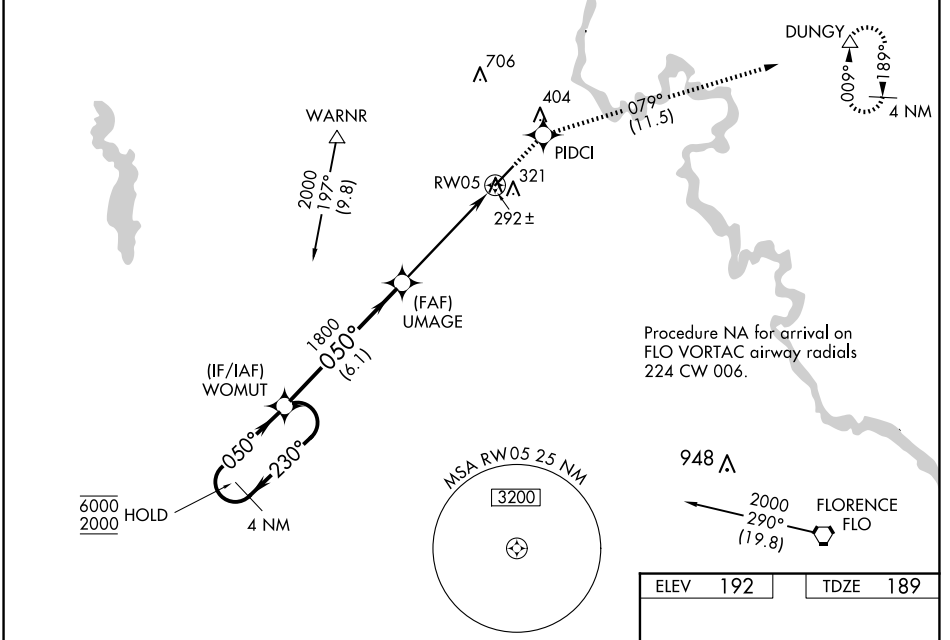
WAAS CH 42704 W05A	APP CRS 050°	Rwy Idg TDZE Apt Elev	5500 189 192
--	------------------------	-----------------------------	---

RNAV (GPS) RWY 5

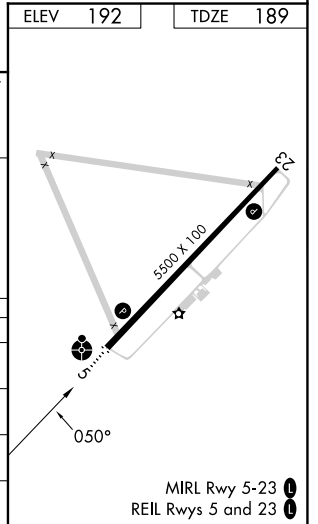
DARLINGTON COUNTY (UDG)

RNP APCH. T Inop table does not apply. For uncompensated Baro-VNAV systems, LNAV/VNAV NA below -15°C or above 54°C.	ODALS 	MISSED APPROACH: Climb to 2000 direct PIDCI and on track 079° to DUNGY and hold.
--	-----------	--

AWOS-3PT 119.925	FLORENCE APP CON * 118.6 341.7	CLNC DEL 118.55	UNICOM 123.0(CTAF) 0
----------------------------	--	---------------------------	--------------------------------



CATEGORY	A	B	C	D
LPV DA	493-1		304 (400-1)	
LNAV/VNAV DA	562-1¼		373 (400-1¼)	
LNAV MDA	560-1		371 (400-1)	
CIRCLING	640-1	660-1	720-1½	560-1¼
	448 (500-1)	468 (500-1)	528 (600-1½)	371 (400-1¼)
			1020-2¾	828 (900-2¾)



SE-2, 23 JAN 2025 to 20 FEB 2025

SE-2, 23 JAN 2025 to 20 FEB 2025