

WAAS CH <b>7207</b> <b>W02A</b>	APP CRS <b>023°</b>	Rwy Idg TDZE Apt Elev	<b>5197</b> <b>826</b> <b>827</b>
---------------------------------------	------------------------	-----------------------------	-----------------------------------------

# RNAV (GPS) RWY 2

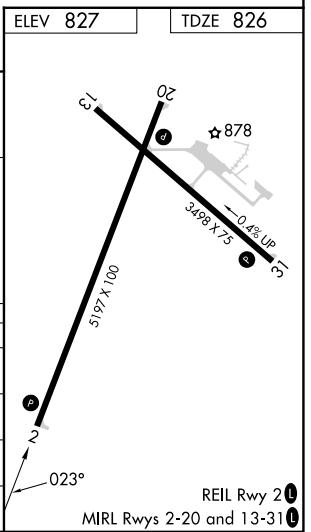
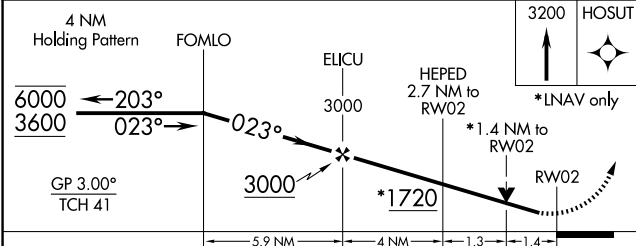
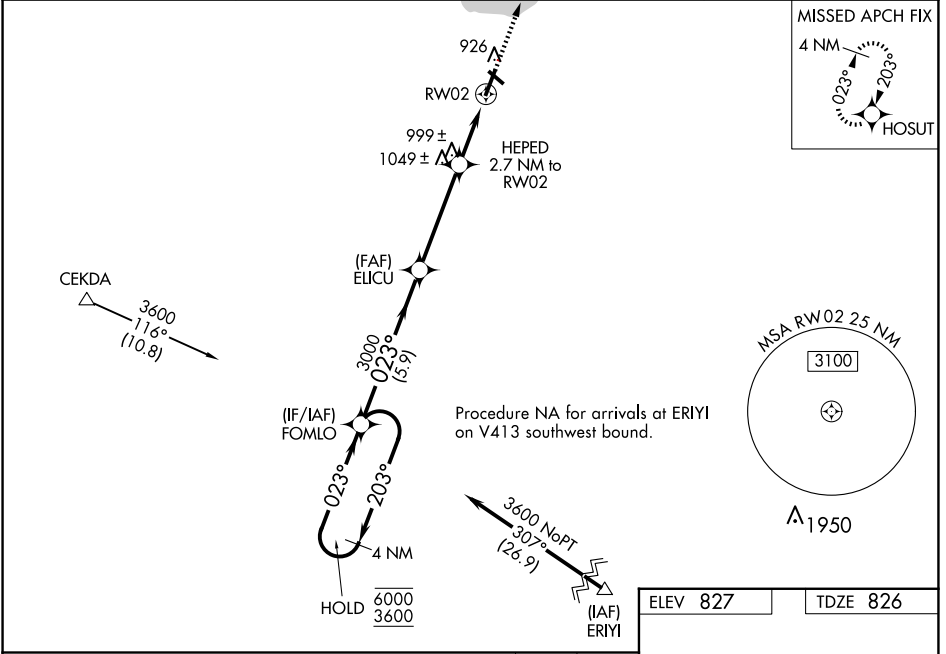
JOHN F KENNEDY MEML (ASX)

**RNP APCH.**

**⚠** For uncompensated Baro-VNAV systems, LNAV/VNAV NA below -28°C or above 54°C.  
**⚠** Rwy 2 helicopter visibility reduction below ¼ SM NA. Baro-VNAV and VDP NA when using Ironwood altimeter setting. When local altimeter setting not received, use Ironwood altimeter setting and increase all DA 132 feet and all MDAs 140 feet; increase LPV all Cats and LNAV Cat C/D visibility ⅓ SM, LNAV/VNAV all Cats and Circling Cat C/D visibility ½ SM.

**MISSED APPROACH:**  
Climb to 3200 direct HOSUT and hold.

ASOS <b>126.775</b>	MINNEAPOLIS CENTER <b>126.45 276.4</b>	GCO <b>122.25</b>	UNICOM <b>122.8</b> (CTAF) <b>0</b>
------------------------	-------------------------------------------	----------------------	----------------------------------------



CATEGORY	A	B	C	D
LPV DA		1076-1	250 (300-1)	
LNAV/VNAV DA		1103-1	277 (300-1)	
LNAV MDA	1300-1	474 (500-1)	1300-1¾	474 (500-1¾)
<b>C</b> CIRCLING	1300-1	473 (500-1)	1440-1¾ 613 (700-1¾)	1560-2¼ 733 (800-2¼)

EC-3, 23 JAN 2025 to 20 FEB 2025

EC-3, 23 JAN 2025 to 20 FEB 2025