

|                         |             |          |             |
|-------------------------|-------------|----------|-------------|
| VOR/DME H <sup>UO</sup> | APP CRS     | Rwy Idg  | <b>3358</b> |
| <b>116.1</b>            | <b>039°</b> | TDZE     | <b>548</b>  |
| Chan <b>108</b>         |             | Apt Elev | <b>548</b>  |

# VOR/DME or GPS RWY 5

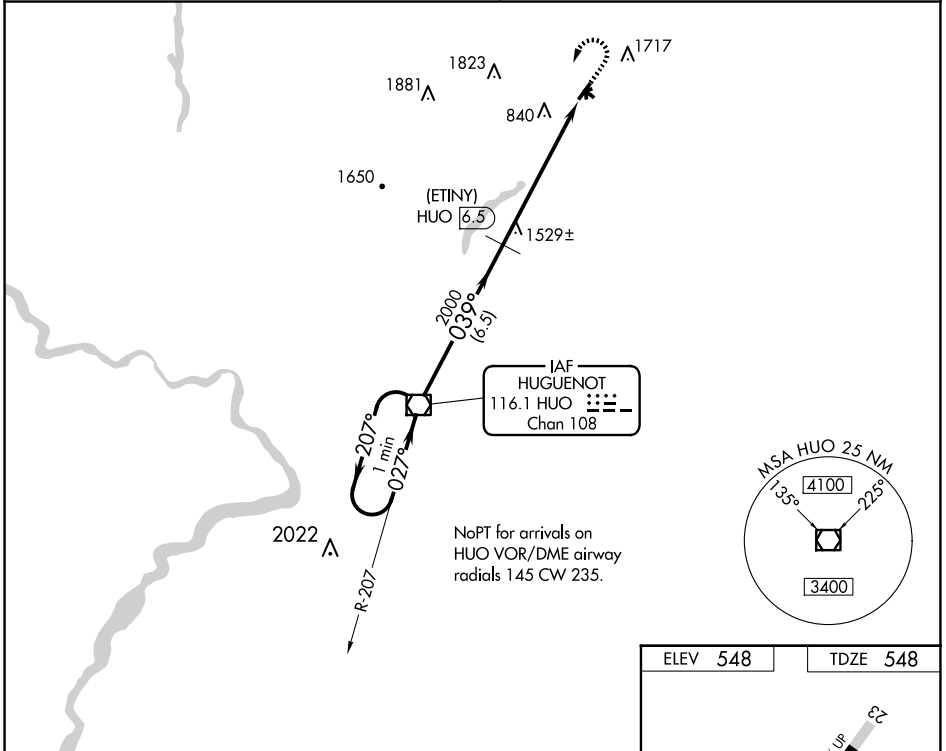
WURTSBORO/SULLIVAN COUNTY (N82)

▼ Obtain local altimeter setting on CTAF, when not received, procedure NA. Procedure not authorized at night. Circling Cat B/C NA north of Rwy 9/27. Helicopter visibility reduction below 1 SM NA.

MISSED APPROACH: Climb to 2300 then climbing left turn to 3500 direct H<sup>UO</sup> VOR/DME and hold.

NEW YORK APP CON  
**132.75 363.1**

UNICOM  
**122.8 (CTAF)**



NE-2, 23 JAN 2025 to 20 FEB 2025

NE-2, 23 JAN 2025 to 20 FEB 2025

