

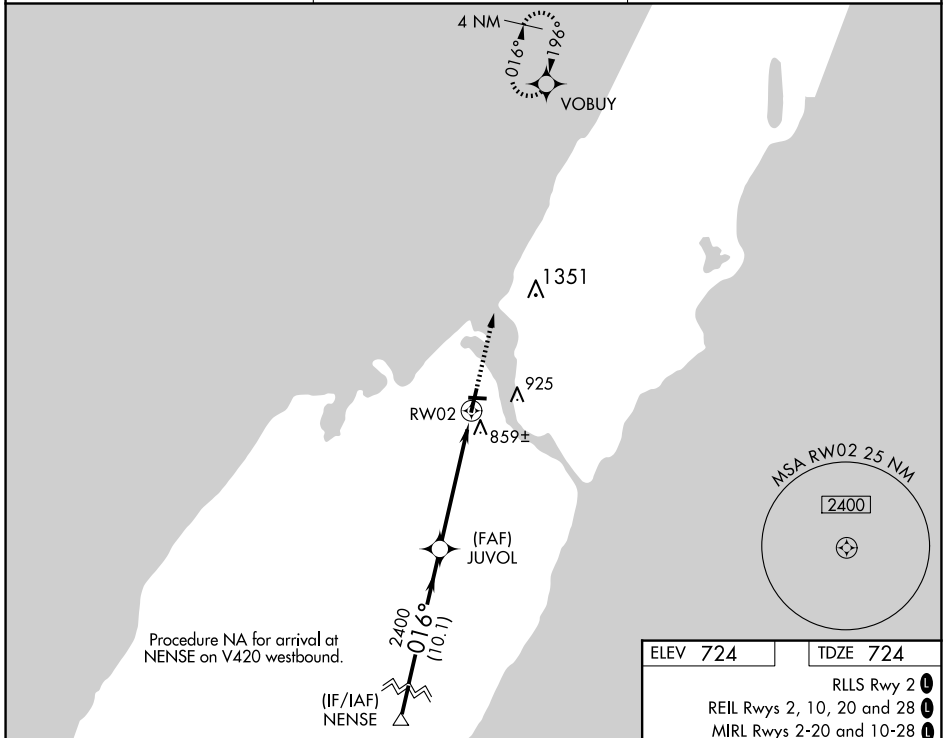
WAAS CH <b>81904</b> <b>W02A</b>	APP CRS <b>016°</b>	Rwy Idg 4599	TDZE 724
		Apt Elev 724	

# RNAV (GPS) RWY 2

DOOR COUNTY CHERRYLAND (SUE)

RNP APCH.	<p>▼ Rwy 2 helicopter visibility reduction below 3/4 SM NA. For uncompensated Baro-VNAV systems, LNAV/VNAV NA below -16°C or above 54°C.</p> <p>▲ MISSED APPROACH: Climb to 2600 direct VOBUY and hold.</p>
-----------	---

AWOS-3PT <b>128.325</b>	GREEN BAY APP CON * <b>119.25 338.2</b>	UNICOM <b>122.7(CTAF) 0</b>
----------------------------	--	--------------------------------



EC-3, 23 JAN 2025 to 20 FEB 2025

EC-3, 23 JAN 2025 to 20 FEB 2025

ELEV 724	TDZE 724
RLLS Rwy 2 <b>1</b> REIL Rws 2, 10, 20 and 28 <b>1</b> MIRL Rws 2-20 and 10-28 <b>1</b>	

