

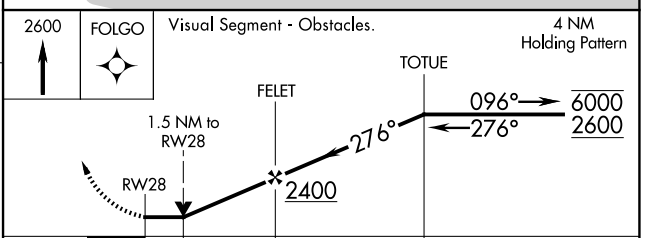
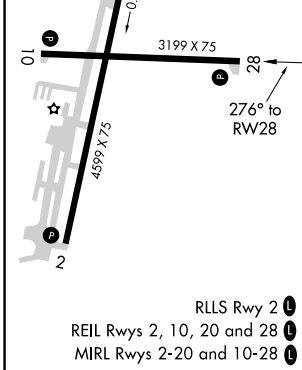
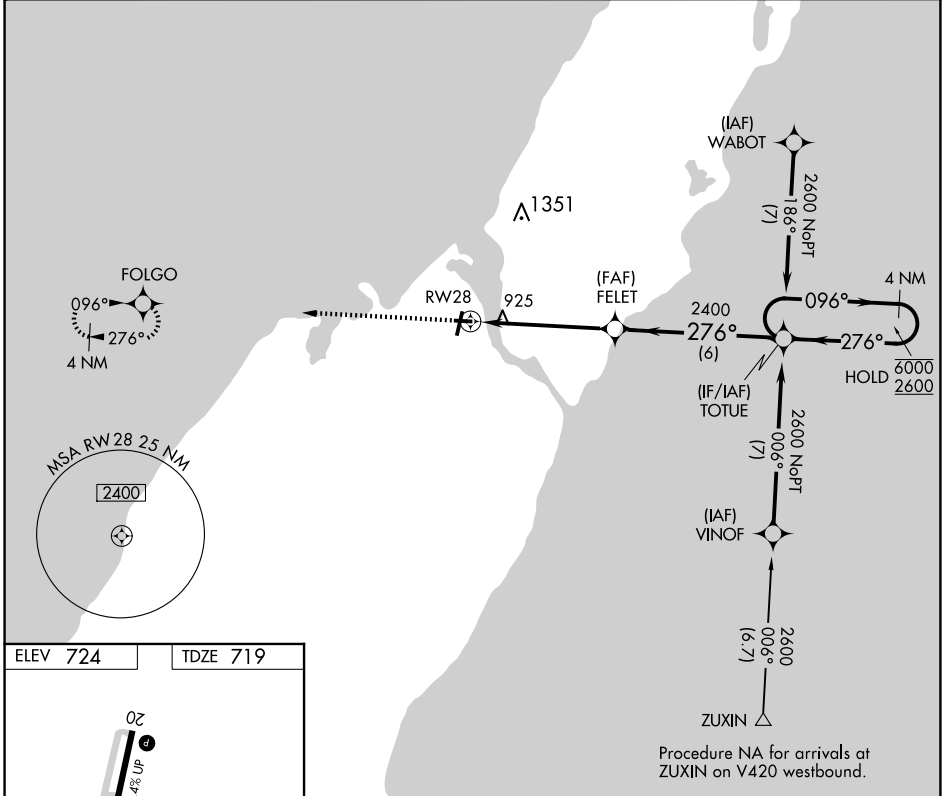
APP CRS 276°	Rwy Idg TDZE Apt Elev	3199 719 724
------------------------	-----------------------------	---

RNAV (GPS) RWY 28

DOOR COUNTY CHERRYLAND (SUE)

RNP APCH - GPS.	MISSED APPROACH: Climb to 2600 direct FOLGO and hold.
Rwy 28 helicopter visibility reduction below 3/4 SM NA.	

AWOS-3PT 128.325	GREEN BAY APP CON ★ 119.25 338.2	UNICOM 122.7 (CTAF) 0
----------------------------	--	---------------------------------



CATEGORY	A	B	C	D
LNAV MDA	1240-1	521 (600-1)	1240-1½ 521 (600-1½)	NA
CIRCLING	1280-1	556 (600-1)	1280-1½ 556 (600-1½)	NA

EC-3, 23 JAN 2025 to 20 FEB 2025

EC-3, 23 JAN 2025 to 20 FEB 2025