

LOC/DME I-HTY 108.5 Chan 22	APP CRS 205°	Rwy ldg TDZE Apt Elev	5002 1216 1216
---	------------------------	-----------------------------	---

ILS or LOC RWY 21

SAWYER COUNTY (HYR)

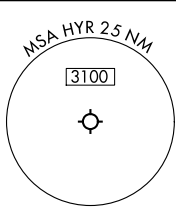
From RZN DME: RNAV 1-GPS required.
DME required.



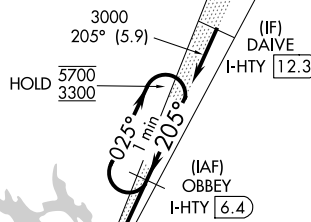
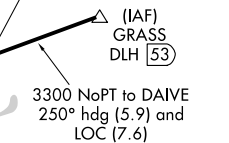
MISSED APPROACH: Climb to 2200 then climbing right turn to 3300 on heading 060° and I-HTY northeast course to OBBEY/I-HTY 6.4 DME and hold.

▼ Circling NA to Rws 16 and 34. Rwy 21 helicopter visibility reduction below 3/4 SM NA. For inop ALS, increase S-ILS 21 all Cats visibility to 1/2 SM, increase LOC Cat A/B visibility to 1 SM, Cat C/D to 1/2 SM.

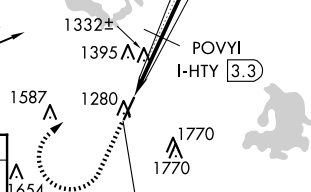
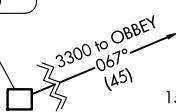
ASOS 118.4	MINNEAPOLIS CENTER 126.45 276.4	UNICOM 122.8 (CTAF)
----------------------	---	-------------------------------



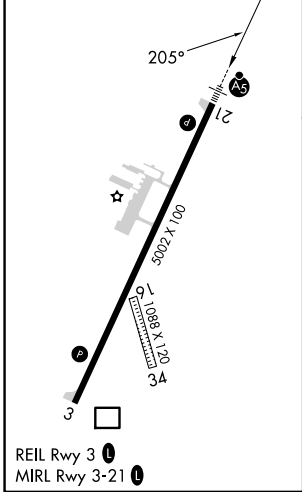
Procedure NA for arrivals at GRASS on V217 southeast bound.



SIREN
Chan 31
RZN
(109.4)

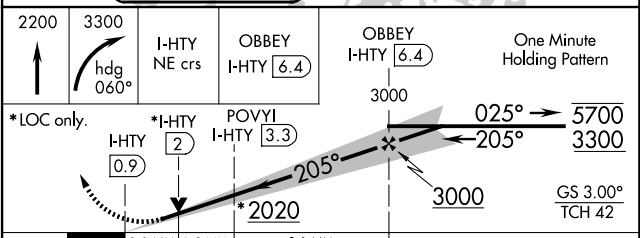


ELEV 1216	TDZE 1216
-----------	-----------



REIL Rwy 3
MIRL Rwy 3-21

LOCALIZER 108.5
I-HTY
Chan 22



CATEGORY	A	B	C	D
S-ILS 21		1518-3/4	302 (400-3/4)	
S-LOC 21		1600-3/4	384 (400-3/4)	
CIRCLING	1860-1 644 (700-1)	2060-1 1/4 844 (900-1 1/4)	2120-2 3/4 904 (1000-2 3/4)	2120-3 904 (1000-3)

EC-3, 23 JAN 2025 to 20 FEB 2025

EC-3, 23 JAN 2025 to 20 FEB 2025