


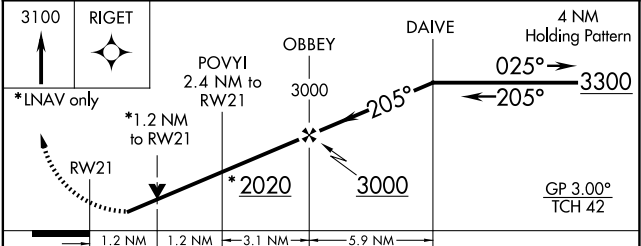
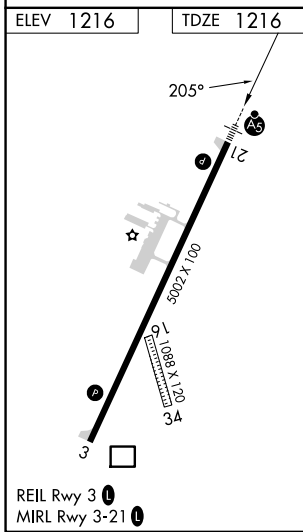
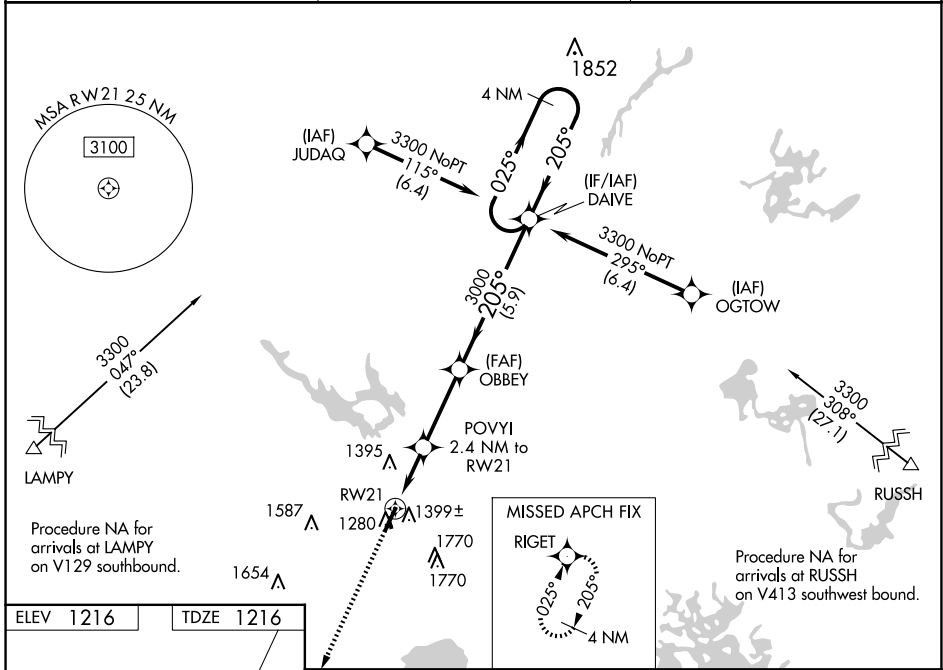
WAAS CH 49000 W21A	APP CRS 205°	Rwy Idg TDZE Apt Elev	5002 1216 1216
--	------------------------	-----------------------------	---

RNAV (GPS) RWY 21

SAWYER COUNTY (HYR)

RNP APCH.	<p>▼ For uncompensated Baro-VNAV systems, LNAV/VNAV NA below -22°C (-7°F) or above 54°C (130°F). For inop MALSR, increase LNAV/VNAV all Cats visibility to 1½ mile and LNAV Cat A and B visibility to 1 mile. Rwy 21 helicopter visibility reduction below ¾ SM NA. Circling NA to Rwy 16 and 34.</p>	<p>MALSR</p> 	<p>MISSED APPROACH: Climb to 3100 direct RIGET and hold.</p>
-----------	---	--	--

ASOS 118.4	MINNEAPOLIS CENTER 126.45 276.4	UNICOM 122.8 (CTAF) 0
----------------------	---	---------------------------------



CATEGORY	A	B	C	D
LPV DA		1518-¾	302 (400-¾)	
LNAV/VNAV DA		1560-¾	344 (400-¾)	
LNAV MDA		1640-¾	424 (500-¾)	
<input checked="" type="checkbox"/> CIRCLING	1860-1 644 (700-1)	2060-1¼ 844 (900-1¼)	2120-2¾ 904 (1000-2¾)	2120-3 904 (1000-3)

EC-3, 23 JAN 2025 to 20 FEB 2025

EC-3, 23 JAN 2025 to 20 FEB 2025