

WAAS CH 90400 W03A	APP CRS 025°	Rwy Idg TDZE Apt Elev	5002 1214 1216
----------------------------------------	------------------------	-----------------------------	-------------------------------------------

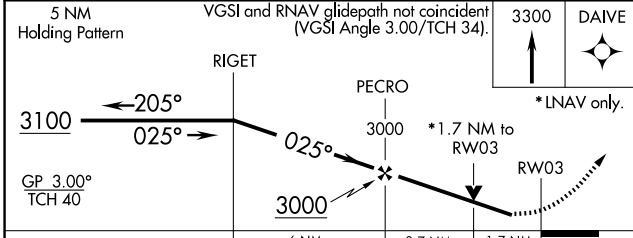
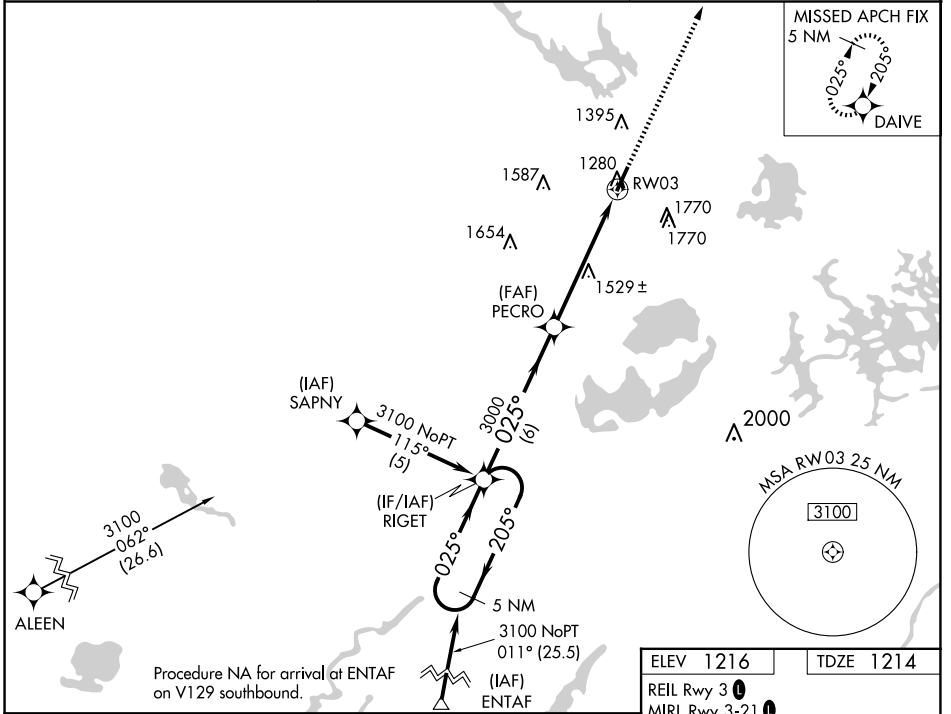
RNAV (GPS) RWY 3

SAWYER COUNTY (HYR)

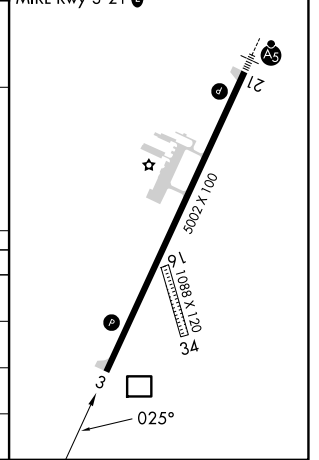
RNP APCH: **▽** For uncompensated Baro-VNAV systems, LNAV/VNAV NA below -22°C or above 54°C. **▲** Rwy 3 helicopter visibility reduction below 3/4 SM NA. Circling NA to Rwy 16 and 34.

MISSED APPROACH: Climb to 3300 direct DAIVE and hold.

ASOS 118.4	MINNEAPOLIS CENTER 126.45 276.4	UNICOM 122.8 (CTAF) 0
----------------------	-------------------------------------------	---------------------------------



ELEV 1216	TDZE 1214
REIL Rwy 3 0	MIRL Rwy 3-21 0



CATEGORY	A	B	C	D
LPV DA	1514-1 300 (300-1)			
LNAV/VNAV DA	1916-2½		702 (700-2½)	
LNAV MDA	1780-1	566 (600-1)	1780-1½ 566 (600-1½)	1780-1¾ 566 (600-1¾)
CIRCLING	1860-1 644 (700-1)	2060-1¼ 844 (900-1¼)	2120-2¾ 904 (1000-2¾)	2120-3 904 (1000-3)

EC-3, 23 JAN 2025 to 20 FEB 2025

EC-3, 23 JAN 2025 to 20 FEB 2025