

APP CRS	Rwy Idg	3040
029°	TDZE	420
	Apt Elev	422

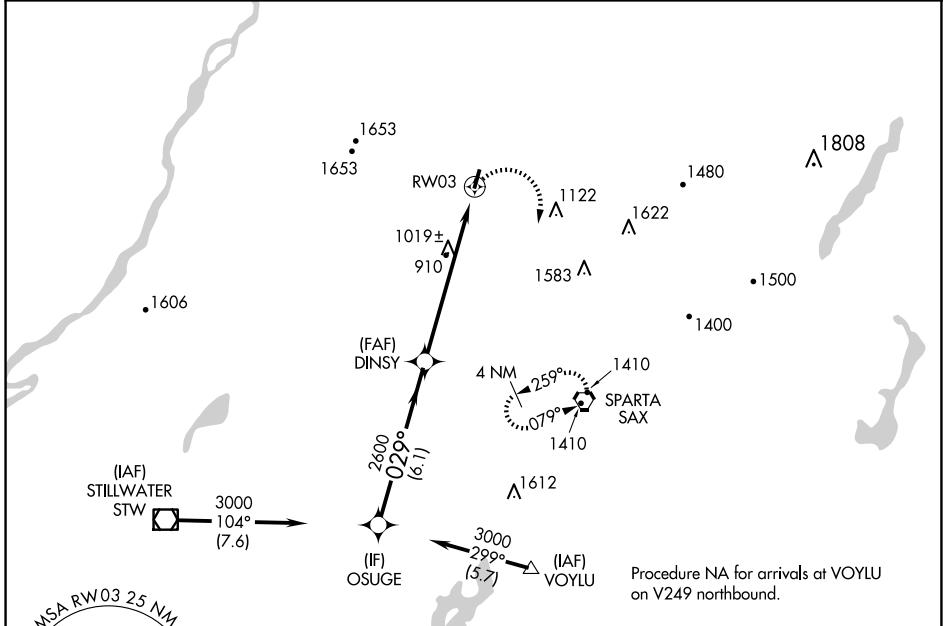
RNAV (GPS) RWY 3

SUSSEX (F'WN)

⚠ DME/DME RNP-0.3 NA. When local altimeter setting not received, use Teterboro altimeter setting and increase all MDA 140 feet; increase LNAV Cats A/B and Circling Cat B visibility ¼ mile and increase LNAV and Circling Cat C visibility ½ mile. Procedure NA at night. Helicopter visibility reduction below 1 SM NA.

MISSED APPROACH: Climbing right turn to 3000 direct SAX VORTAC and hold.

ASOS 118.525	NEWARK APP CON 127.6 379.9	UNICOM 122.7 (CTAF) 0
------------------------	--------------------------------------	---------------------------------



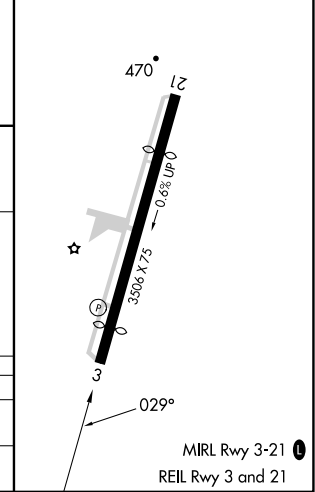
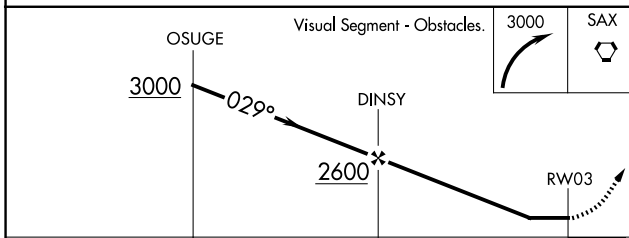
NE-2, 23 JAN 2025 to 20 FEB 2025

NE-2, 23 JAN 2025 to 20 FEB 2025

Procedure NA for arrivals at VOYLU on V249 northbound.



ELEV 422	TDZE 420
----------	----------



CATEGORY	A	B	C	D
LNAV MDA	1300-1 880 (900-1)	1300-1 ¼ 880 (900-1 ¼)	1300-2 ½ 880 (900-2 ½)	NA
C CIRCLING	1300-1 ¼	878 (900-1 ¼)	1300-2 ½ 878 (900-2 ½)	NA

MIRL Rwy 3-21 **0**
REIL Rwy 3 and 21