

LOC/DME I-SIT 108.9 Chan 26	APP CRS 116°	Rwy Idg 6500 TDZE 24 Apt Elev 27
---	------------------------	---

LDA RWY 11

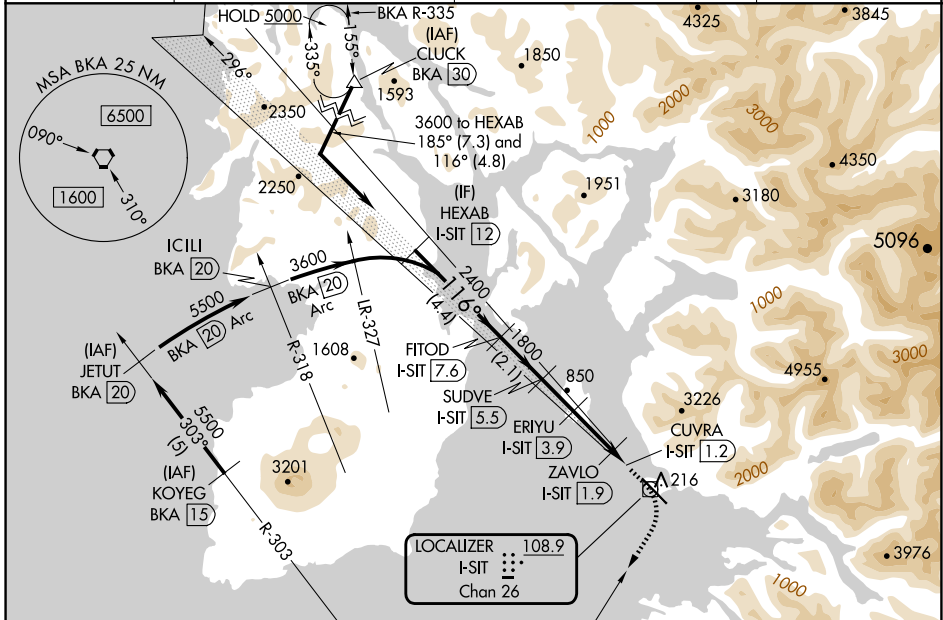
SITKA ROCKY GUTIERREZ (SIT)(PASI)

DME required.

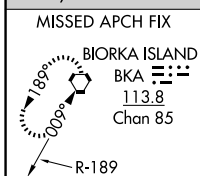
⚠ When local altimeter setting not received, procedure NA.
 ⚠ Circling NA northeast of Rwy 11-29.

MISSED APPROACH: Climb to 600 then climbing right turn to 5500 on heading 192° and BKA VORTAC R-012 to BKA VORTAC and hold, continue climb-in-hold to 5500.

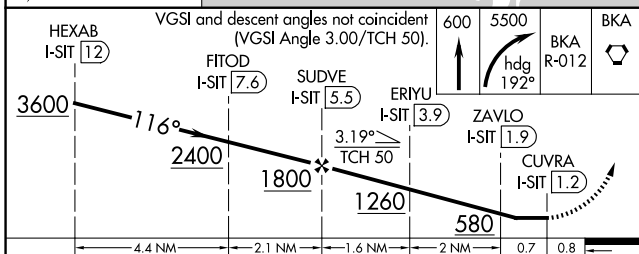
AFIS 135.9	ANCHORAGE CENTER 126.1 335.5	SITKA RADIO 123.6 (CTAF) 0 122.2	UNICOM 122.95
----------------------	--	--	-------------------------



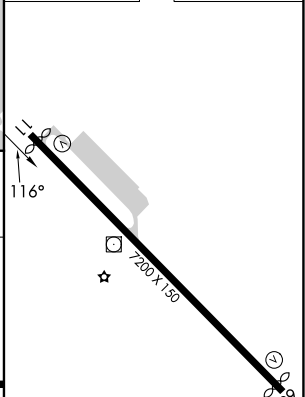
Procedure NA for arrival on BKA VORTAC airway radial 347.



BIORKA ISLAND
113.8 BKA [III]
Chan 85



ELEV 27	D	TDZE 24
---------	---	---------



CATEGORY	A	B	C	D
S-11	520-1 496 (500-1)		520-1 3/8 496 (500-1 3/8)	
CIRCLING	520-1 493 (500-1)		540-1 1/2 513 (600-1 1/2)	1500-3 1473 (1500-3)

REIL Rwy 11 and 29 (1)

HIRL Rwy 11-29 (1)

LDA RWY 11

AK, 26 DEC 2024 to 20 FEB 2025

AK, 26 DEC 2024 to 20 FEB 2025