

VOR/DME AEL	APP CRS	Rwy Idg	5000
109.8	342°	TDZE	1261
Chan 35		Apt Elev	1261

VOR RWY 35

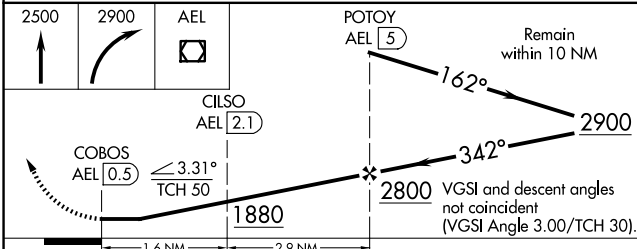
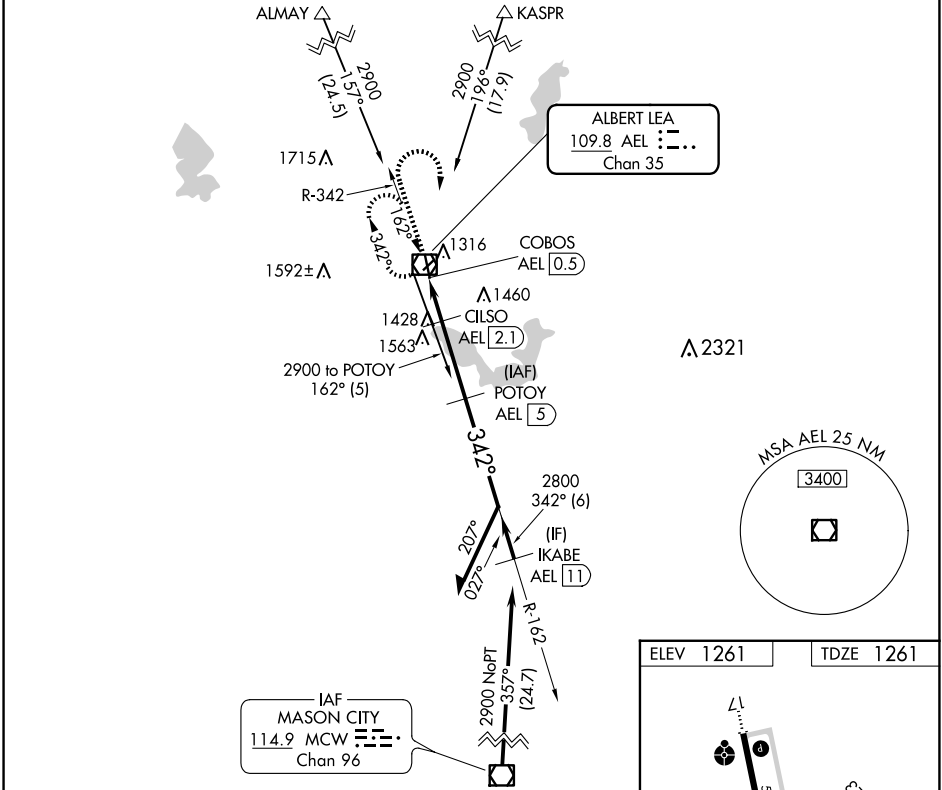
ALBERT LEA MUNI (AEL)

DME required.

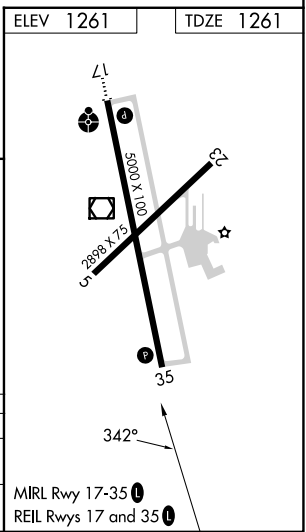
▼ Circling Rwy 5, 23 NA at night.
▲ Rwy 35 helicopter visibility reduction below 3/4 SM NA.

MISSED APPROACH: Climb to 2500 then climbing right turn to 2900 direct AEL VOR/DME and hold.

AWOS-3PT 119.575	ROCHESTER APP CON * 119.8 251.125	UNICOM 123.0 (CTAF) 0
----------------------------	---	---------------------------------



CATEGORY	A	B	C	D
S-35	1740-1	479 (500-1)	1740-1 3/8	479 (500-1 3/8)
CIRCLING	1780-1	519 (600-1)	1920-1 3/4	2040-2 1/2
			659 (700-1 3/4)	779 (800-2 1/2)



NC-1, 23 JAN 2025 to 20 FEB 2025

NC-1, 23 JAN 2025 to 20 FEB 2025