

NDB OLY <b>272</b>	APP CRS <b>048°</b>	Rwy Idg TDZE Apt Elev	<b>3598</b> <b>472</b> <b>482</b>
-----------------------	------------------------	-----------------------------	---

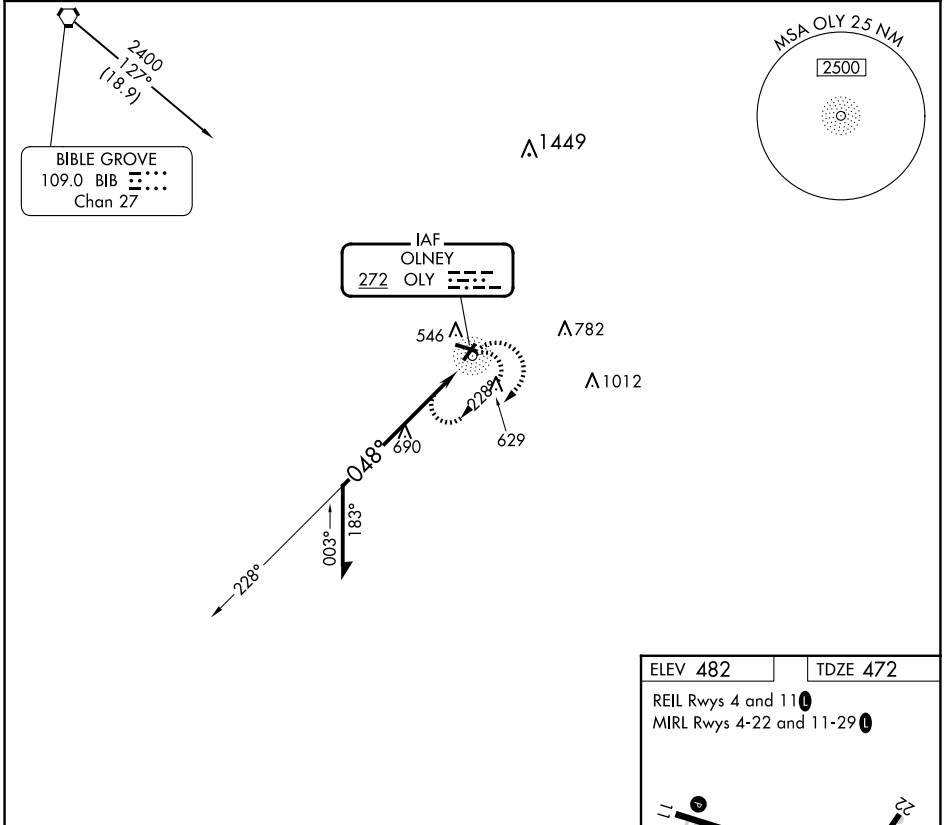
# NDB RWY 4

OLNEY-NOBLE (OLY)

**⚠** Rwy 4 helicopter visibility reduction below 3/4 SM NA. When local altimeter setting not received, use Evansville Rgnl altimeter setting and increase all MDA 140 feet and increase S-4 Cat C and D and Circling Cat C visibility 3/8 mile and Circling Cat D visibility 1/2 mile.

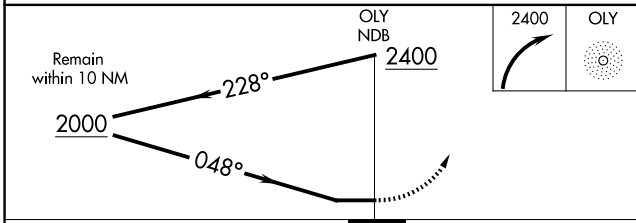
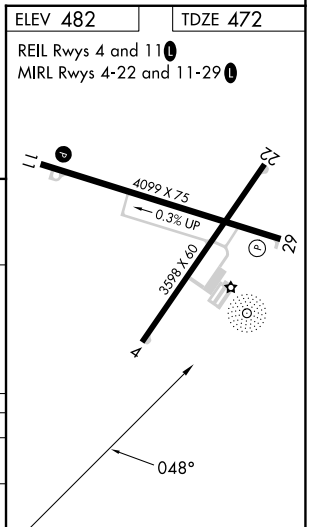
**MISSED APPROACH:**  
Climbing right turn to 2400 in OLY NDB holding pattern.

AWOS-3 <b>119.275</b>	KANSAS CITY CENTER <b>124.3 269.15</b>	UNICOM <b>123.0 (CTAF) 0</b>
--------------------------	---	---------------------------------



**BIBLE GROVE**  
109.0 BIB Chan 27

IAF  
OLNEY  
**272** OLY



CATEGORY	A	B	C	D
S-4	1040-1	568 (600-1)	1040-1 5/8	568 (600-1 1/8)
<b>C</b> CIRCLING	1040-1	558 (600-1)	1040-1 5/8 558 (600-1 1/8)	1180-2 1/4 698 (700-2 1/4)

EC-3, 23 JAN 2025 to 20 FEB 2025

EC-3, 23 JAN 2025 to 20 FEB 2025