

| | | | |
|--|------------------------|-----------------------------|---|
| WAAS CH 49228 W05A | APP CRS 050° | Rwy Idg TDZE Apt Elev | 3741 1041 1041 |
|--|------------------------|-----------------------------|---|

RNAV (GPS) RWY 5

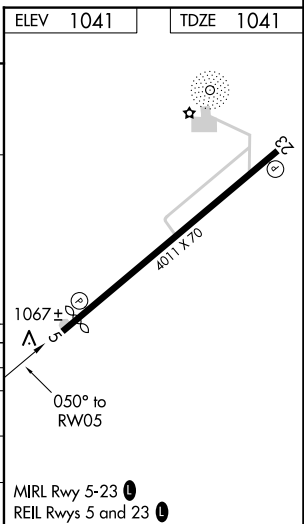
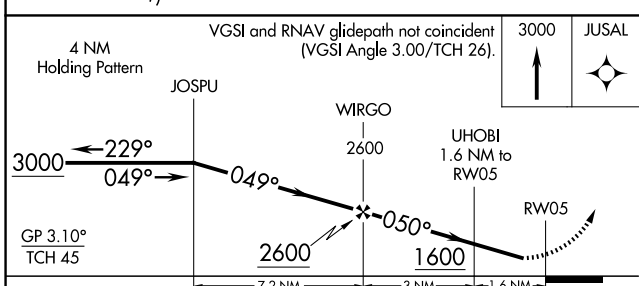
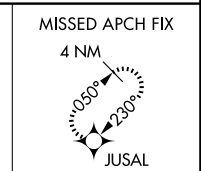
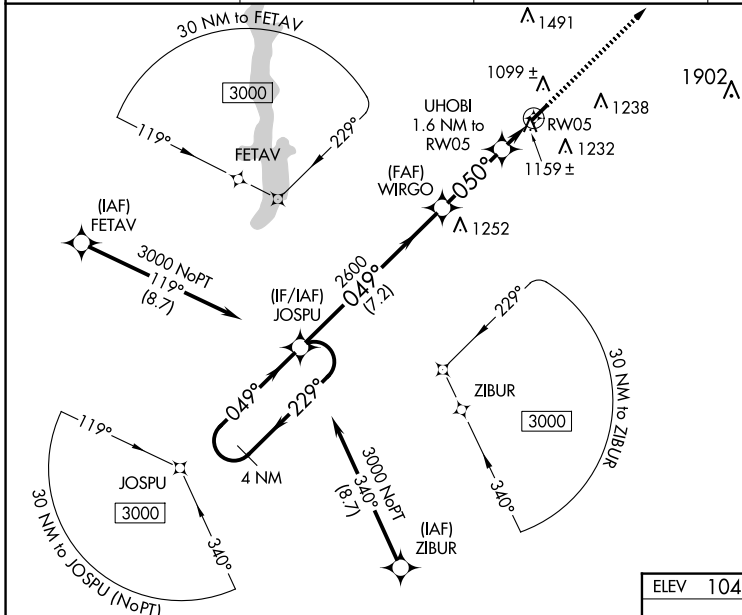
MIAMI UNIVERSITY (OXD)

RNP APCH - GPS.

NA Baro-VNAV NA when using Covington altimeter setting. Straight-in/Circling Rwy 5 at low, operational VGSI required, remain on or above VGSI glidepath until threshold. Rwy 5 helicopter visibility reduction below 1 SM NA. When local altimeter setting not received, use Covington altimeter setting: increase LPV DA to 1393 and all visibilities 1/8 SM; increase LNAV/VNAV DA to 1419 and all visibilities 1/4 SM; increase all MDA 100 feet and visibility LNAV Cat C 3/8 SM and Circling Cat C 1/2 SM.

MISSED APPROACH:
Climb to 3000 direct
JUSAL and hold.

| | | | |
|----------------------------|---|-------------------------------|--------------|
| AWOS-3PT 118.625 | CINCINNATI APP CON 121.0 254.25 | UNICOM 122.8 (CTAF) | 122.9 |
|----------------------------|---|-------------------------------|--------------|



| CATEGORY | A | B | C | D |
|--------------|-----------------------|-----------------------|-------------------------|----|
| LPV DA | 1304-1 | 263 (300-1) | | NA |
| LNAV/VNAV DA | 1330-1 | 289 (300-1) | | NA |
| LNAV MDA | 1420-1 | 379 (400-1) | | NA |
| CIRCLING | 1460-1 419 (500-1) | 1600-1 559 (600-1) | 1600-1½ 559 (600-1½) | NA |

EC-2, 23 JAN 2025 to 20 FEB 2025

EC-2, 23 JAN 2025 to 20 FEB 2025