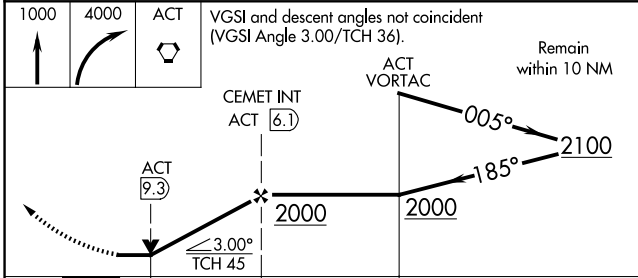
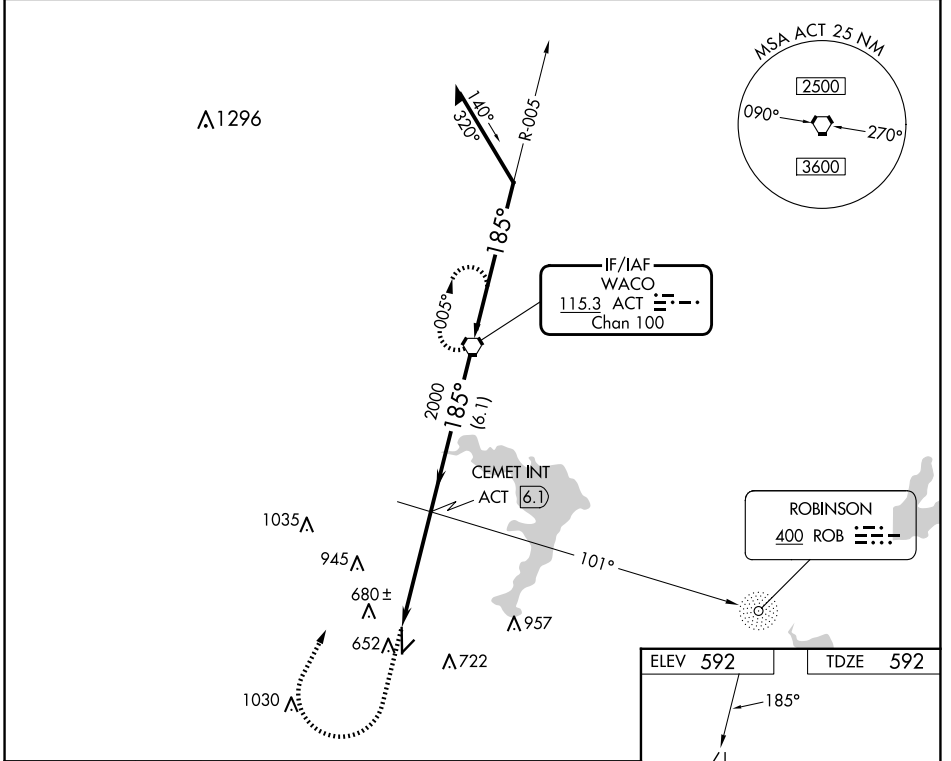


VORTAC ACT	APP CRS	Rwy Idg	5501
115.3	185°	TDZE	592
Chan 100		Apt Elev	592

# VOR RWY 17

MC GREGOR EXEC (PWG)

ADF or DME required.		MISSED APPROACH: Climb to 1000 then climbing right turn to 4000 direct ACT VORTAC and hold, continue climb-in-hold to 4000.	
ASR			
AWOS-3PT	WACO APP CON *	GCO	UNICOM
135.525	127.65 352.0	121.725	123.05 (CTAF) 0



ELEV 592	TDZE 592
----------	----------

REIL Rwy 17	MIRL Rwy 17-35				
FAF to MAP 4.3 NM					
Knots	60	90	120	150	180
Min:Sec	4:18	2:52	2:09	1:43	1:26

CATEGORY	A	B	C	D
S-17	980-1	388 (400-1)	980-1 1/8 388 (400-1 1/8)	NA
CIRCLING	980-1 388 (400-1)	1060-1 468 (500-1)	1300-2 708 (800-2)	NA

SC-3, 23 JAN 2025 to 20 FEB 2025

SC-3, 23 JAN 2025 to 20 FEB 2025