

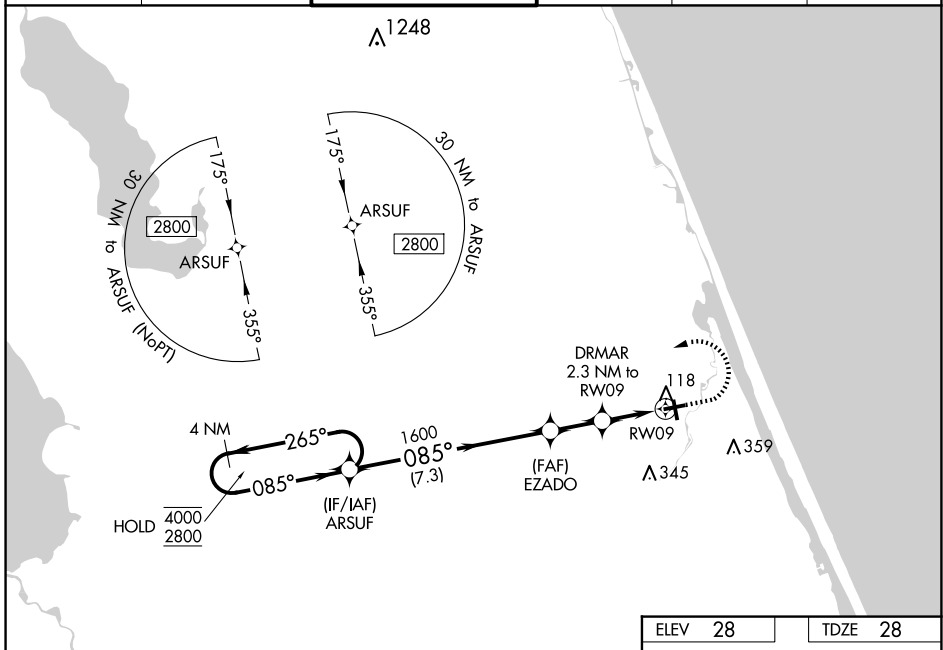
WAAS CH 82334 W09A	APP CRS 085°	Rwy Idg TDZE 28 Apt Elev 28	4005
--	------------------------	---	-------------

RNAV (GPS) RWY 9

ORMOND BEACH MUNI (OMN)

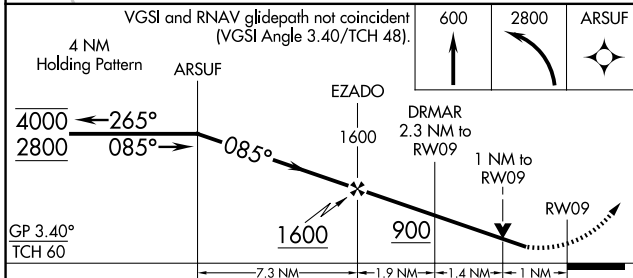
RNP APCH - GPS.	<p>▼ Rwy 9 helicopter visibility reduction below 3/4 SM NA. For uncompensated Baro-VNAV systems, LNAV/VNAV NA below -15°C or above 54°C. When local altimeter setting not received, use DAB altimeter setting: increase LPV DA to 332 feet; increase LNAV/VNAV DA to 337 feet; increase all MDAs 20 feet. Baro-VNAV and VDP NA when using DAB altimeter setting.</p>	MISSED APPROACH: Climb to 600 then climbing left turn to 2800 direct ARSUF and hold, continue climb-in-hold to 2800.
-----------------	--	--

ATIS 118.475	DAYTONA APP CON 125.8 269.075	ORMOND BEACH TOWER* 119.075 (CTAF)	GND CON 121.625	CLNC DEL 121.625	UNICOM 123.05
------------------------	---	--	---------------------------	----------------------------	-------------------------

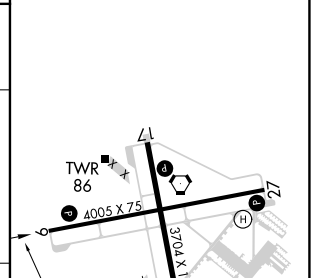


SE-3, 23 JAN 2025 to 20 FEB 2025

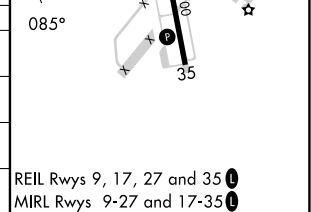
SE-3, 23 JAN 2025 to 20 FEB 2025



ELEV 28	TDZE 28
---------	---------



CATEGORY	A	B	C	D
LPV DA		313-7/8	285 (300-7/8)	NA
LNAV/VNAV DA		318-7/8	290 (300-7/8)	NA
LNAV MDA	420-1	392 (400-1)	420-1 1/8 392 (400-1 1/8)	NA
CIRCLING	500-1	472 (500-1)	740-2 712 (800-2)	NA



REIL Rwy 9, 17, 27 and 35
MIRL Rwy 9-27 and 17-35