

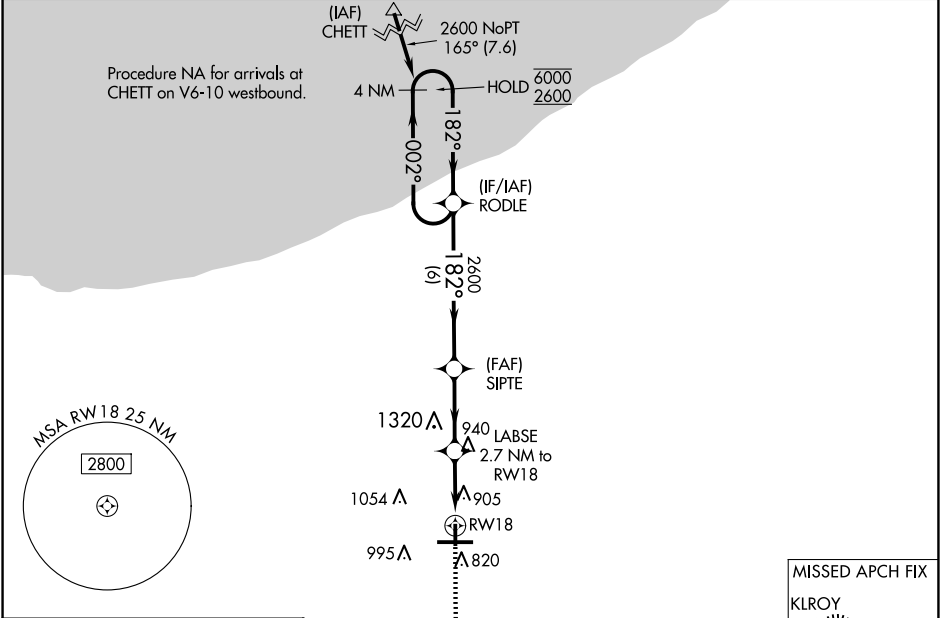
WAAS CH 82406 W18A	APP CRS 182°	Rwy Idg TDZE Apt Elev	4001 770 770
--	------------------------	-----------------------------	---

RNAV (GPS) RWY 18

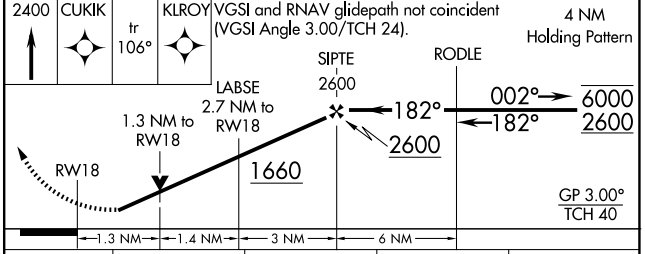
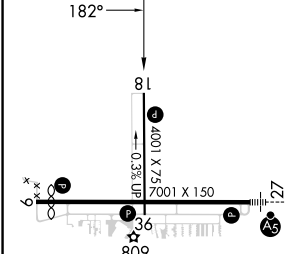
PORTER COUNTY RGNL (VPZ)

RNP APCH-GPS.			MISSED APPROACH: Climb to 2400 direct CUKIK and on track 106° to KLROY and hold.
ASOS 125.875	SOUTH BEND APP CON * 132.05 257.8	CLNC DEL 120.525	UNICOM 122.725 (CTAF) 0

ASOS 125.875	SOUTH BEND APP CON * 132.05 257.8	CLNC DEL 120.525	UNICOM 122.725 (CTAF) 0
------------------------	---	----------------------------	-----------------------------------



ELEV 770	D TDZE 770
----------	-------------------



CATEGORY	A	B	C	D
LPV DA	1059-7/8	289 (300-7/8)		NA
LNAV/VNAV DA	1200-1 1/4	430 (500-1 1/4)		NA
LNAV MDA	1200-1	430 (500-1)		NA
CIRCLING	1260-1 490 (500-1)	1300-1 530 (600-1)		NA

HIRL Rwy 9-27 **1**
MIRL Rwy 18-36 **1**
REIL Rwys 9, 18 and 36 **1**

VALPARAISO, INDIANA
Amdt 1 15JUN23

41°27'N-87°00'W

PORTER COUNTY RGNL (VPZ) RNAV (GPS) RWY 18

EC-2, 23 JAN 2025 to 20 FEB 2025

EC-2, 23 JAN 2025 to 20 FEB 2025