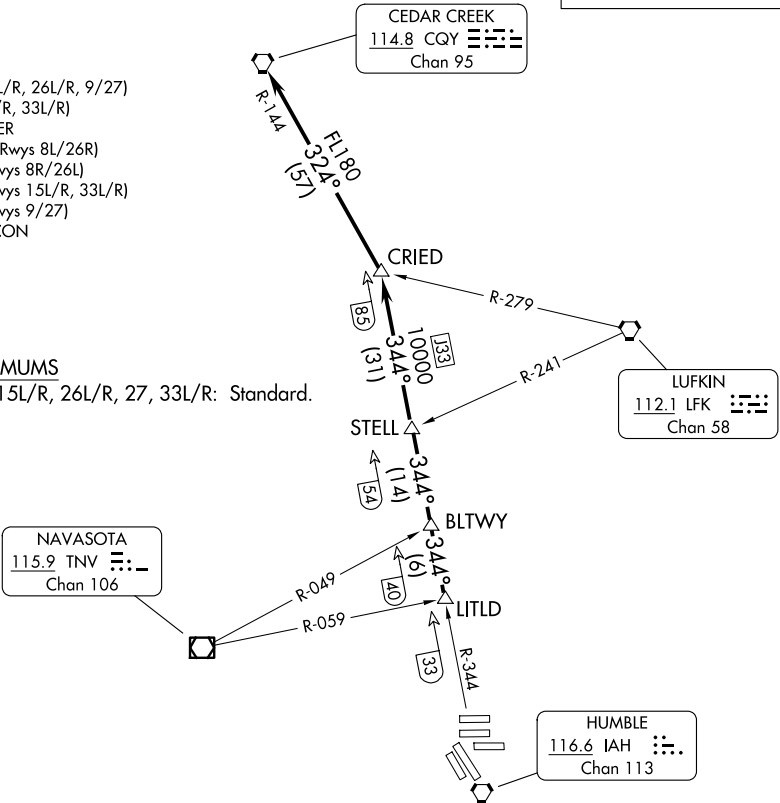


CRIED ONE DEPARTURE

D-ATIS
 124.05
 CLNC DEL
 128.1
 CPDLC
 GND CON
 118.575 (Rwys 8L/R, 26L/R, 9/27)
 121.7 (Rwys 15L/R, 33L/R)
 HOUSTON TOWER
 120.725 290.2 (Rwys 8L/26R)
 125.35 290.2 (Rwys 8R/26L)
 127.3 288.25 (Rwys 15L/R, 33L/R)
 135.15 290.2 (Rwys 9/27)
 HOUSTON DEP CON
 132.25 285.425

**TOP ALTITUDE:
 16000**

TAKEOFF MINIMUMS
 Rwys 8L/R, 9, 15L/R, 26L/R, 27, 33L/R: Standard.



NOTE: RADAR required.

NOTE: Chart not to scale.

DEPARTURE ROUTE DESCRIPTION

TAKEOFF ALL RUNWAYS: Climb on assigned heading for RADAR vectors to LITLD INT, maintain 16000. Expect filed altitude 10 minutes after departure, thence

. . . . on IAH R-344 to STELL INT, then on IAH R-344 to CRIED INT, then left turn on CQY R-144 to CQY VORTAC.