

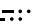
# EL DORADO ONE DEPARTURE

AL-5461 (FAA)

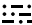
HOUSTON, TEXAS

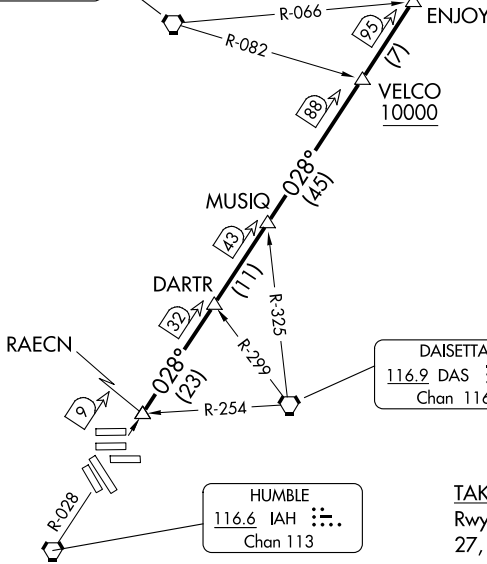
D-ATIS  
 124.05  
 CLNC DEL  
 128.1  
 CPDLC  
 GND CON  
 118.575 (Rwys 8L/R, 26L/R, 9/27)  
 121.7 (Rwys 15L/R, 33L/R)  
 HOUSTON TOWER  
 120.725 290.2 (Rwys 8L/26R)  
 125.35 290.2 (Rwys 8R/26L)  
 127.3 288.25 (Rwys 15L/R, 33L/R)  
 135.15 290.2 (Rwys 9/27)  
 HOUSTON DEP CON  
 132.25 285.425  
 HOUSTON DEP CON  
 132.25 285.425

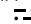
**TOP ALTITUDE:  
 16000**


EL DORADO  
 115.5 ELD   
 Chan 102

NOTE: RADAR required.  
 NOTE: For aircraft destined KMEM  
 or filed via Q32 or J42.

LUFKIN  
 112.1 LFK   
 Chan 58



DAISETTA  
 116.9 DAS   
 Chan 116

HUMBLE  
 116.6 IAH   
 Chan 113

**TAKEOFF MINIMUMS**  
 Rwys 8L/R, 9, 15L/R, 26L/R,  
 27, 33L/R: Standard.

NOTE: Chart not to scale.

## DEPARTURE ROUTE DESCRIPTION

**TAKEOFF ALL RUNWAYS:** Climb on assigned heading for RADAR vectors to RAECN INT, maintain 16000. Expect filed altitude 10 minutes after departure, thence . . .

. . . on IAH R-028 and the ELD R-208 to ELD VOR/DME, cross VELCO INT at or above 10000.