

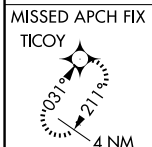
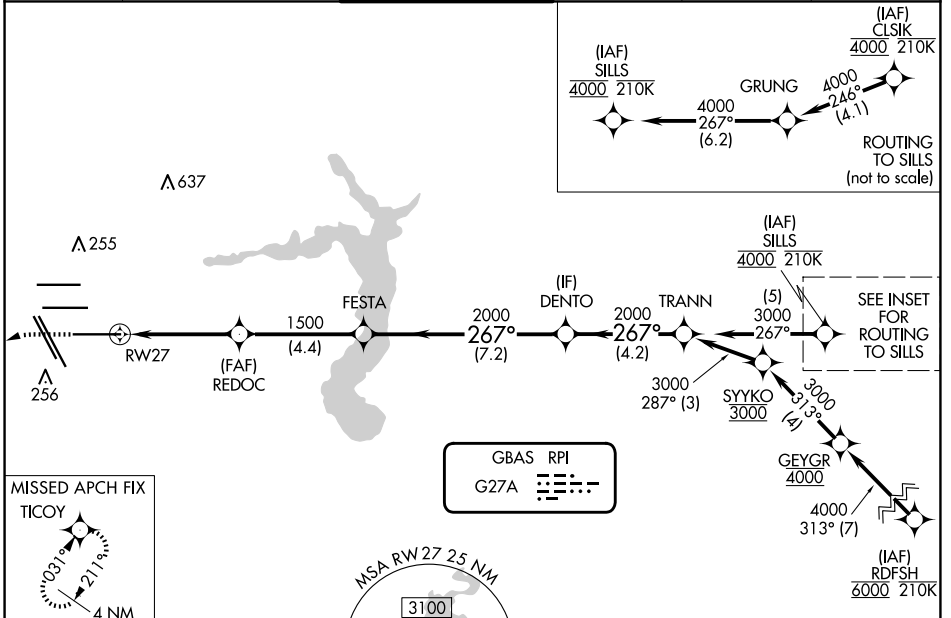
GBAS CH <b>22306</b> <b>G27A</b>	APP CRS <b>267°</b>	Rwy Idg TDZE <b>86</b> Apt Elev <b>96</b>	<b>10000</b>
--	------------------------	---	--------------

# GLS RWY 27

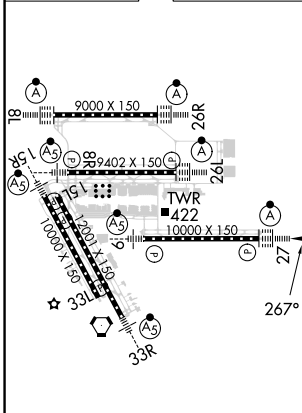
GEORGE BUSH INTCNL/HOUSTON (IAH)

RNP APCH - GPS.		ALSIF-2 	MISSED APPROACH: Climb to 560 then climbing left turn to 3100 direct TICOY and hold.
Simultaneous approach authorized. Use of FD or AP required during simultaneous operations. Autopilot coupled approach NA below 286.			

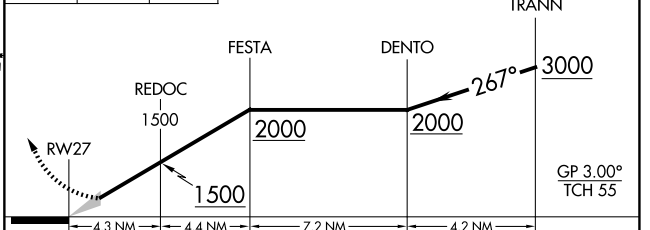
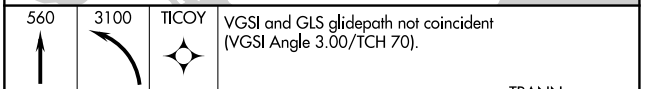
D-ATIS <b>124.05</b>	HOUSTON APP CON <b>120.05 379.1 EAST</b> <b>124.35 316.15 WEST</b>	HOUSTON TOWER <b>135.15 290.2</b>	GND CON <b>118.575</b>	CLNC DEL <b>128.1</b>	CPDLC
-------------------------	--	--------------------------------------	---------------------------	--------------------------	-------



ELEV 96	<b>D</b>	TDZE 86
---------	----------	---------



TDZ/CL Rwy 8R, 8L, 15R, 26R, 26L, 27 and 33L  
HIRL all Rwy



CATEGORY	A	B	C	D
GLS DA	286/18 200 (200-1/2)			

SC-5, 23 JAN 2025 to 20 FEB 2025

SC-5, 23 JAN 2025 to 20 FEB 2025