

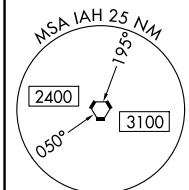
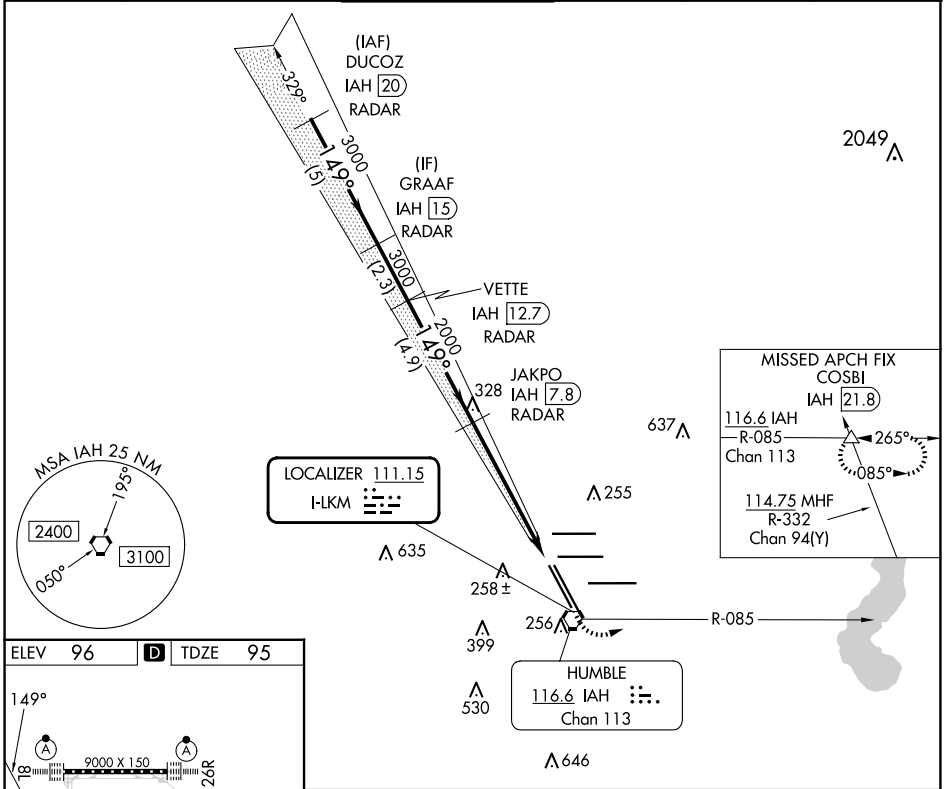
LOC I-LKM <b>111.15</b>	APP CRS <b>149°</b>	Rwy Idg <b>10000</b> TDZE <b>95</b> Apt Elev <b>96</b>
----------------------------	------------------------	--

# ILS or LOC RWY 15R

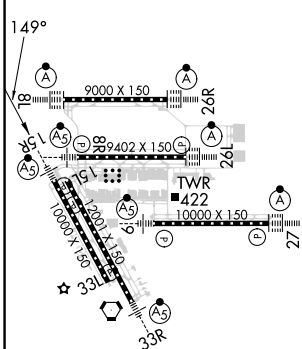
GEORGE BUSH INTCNL/HOUSTON (IAH)

RADAR required for procedure entry. DME or RADAR required.		MALS/R	MISSED APPROACH: Climb to 1000 then climbing left turn to 2000 on IAH VORTAC R-085 to COSBI INT/IAH 21.8 DME and hold.
DME from IAH VORTAC. Simultaneous reception of I-LKM and IAH DME required. For inop ALS, increase S-ILS 15R Cat E visibility to RVR 4000, and S-LOC 15R Cat C/D/E visibility to 1½ SM.			

D-ATIS <b>124.05</b>	HOUSTON APP CON <b>120.05 379.1 EAST</b> <b>124.35 316.15 WEST</b>	HOUSTON TOWER <b>127.3 288.25</b>	GND CON <b>121.7</b>	CLNC DEL <b>128.1</b>	CPDLC
-------------------------	--	--------------------------------------	-------------------------	--------------------------	-------



ELEV 96	<b>D</b>	TDZE 95
---------	----------	---------



TDZ/CL Rwy 8R, 8L, 15R, 26R, 26L, 27 and 33L  
HIRL all Rwy

FAF to MAP 5.8 NM

Knots	60	90	120	150	180
Min:Sec	5:48	3:52	2:54	2:19	1:56

VGSi and ILS glidepath not coincident (VGSi Angle 3.00/TCH 71).		1000	2000	COSBI
DUCOZ IAH 20 RADAR	GRAAF IAH 15 RADAR	VETTE IAH 12.7 RADAR	JAKPO IAH 7.8 RADAR	
3000		149°	3000	3000
GS 3.00° TCH 54		149°	2000	2000
5 NM		2.3 NM	4.9 NM	4.5 NM
CATEGORY	A	B	C	D
S-ILS 15R	295/18 200 (200-½)			
S-LOC 15R	580/24	485 (500-½)	580/50	485 (500-1)

\* IAH 3.3 IAH 2

\* LOC only.

SC-5, 23 JAN 2025 to 20 FEB 2025

SC-5, 23 JAN 2025 to 20 FEB 2025