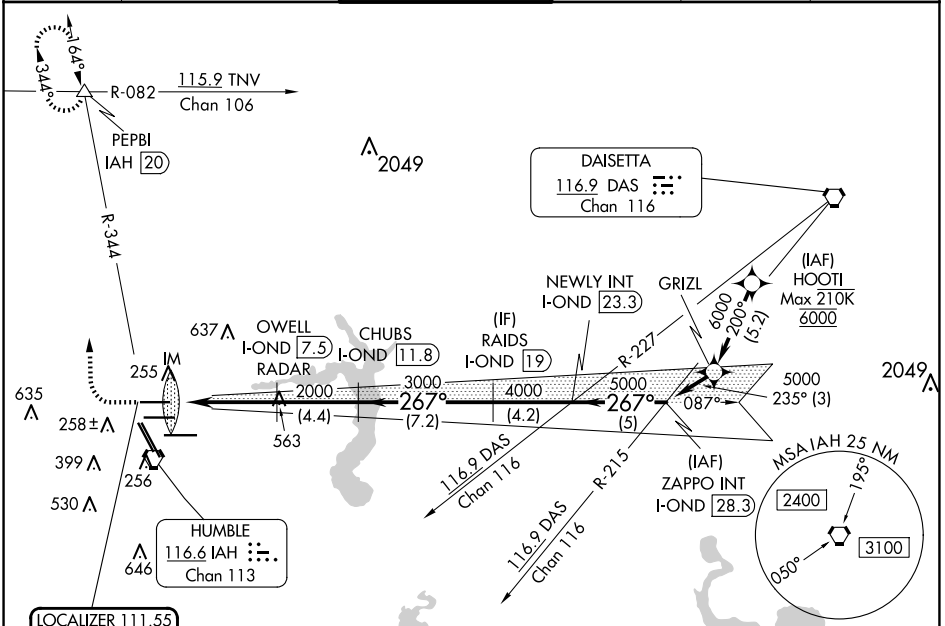


LOC/DME I-OND <b>111.55</b> Chan <b>52 (Y)</b>	APP CRS <b>267°</b>	Rwy Idg <b>9000</b> TDZE <b>95</b> Apt Elev <b>96</b>
--	------------------------	---

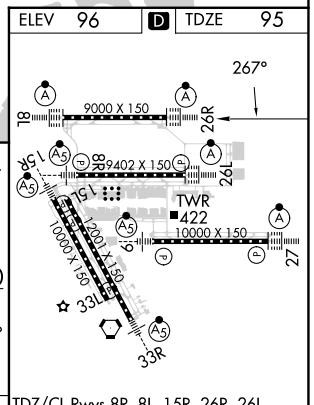
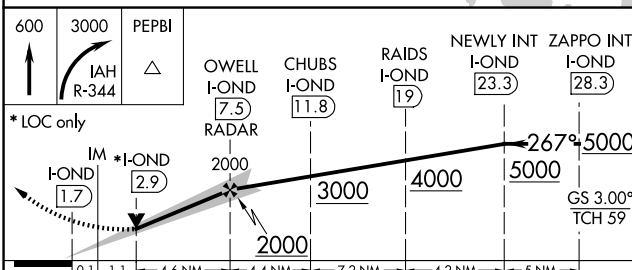
# ILS or LOC RWY 26R

GEORGE BUSH INTCNL/HOUSTON (IAH)

DME required. From HOOI: RNAV 1-GPS required.		ALSIF-2 	MISSED APPROACH: Climb to 600 then climbing right turn to 3000 on IAH VORTAC R-344 to PEPBI INT/IAH 20 DME and hold.		
Simultaneous approach authorized with Rwy 26L and Rwy 27. For inop ALS, increase S-ILS 26R Cat E visibility to RVR 4000, and S-LOC 26R Cat C/D/E visibility to 1 3/8 SM.					
D-ATIS <b>124.05</b>	HOUSTON APP CON <b>120.05 379.1 EAST</b> <b>124.35 316.15 WEST</b>	HOUSTON TOWER <b>120.725 290.2</b>	GND CON <b>118.575</b>	CLNC DEL <b>128.1</b>	CPDLC



ELEV 96	<b>D</b> TDZE 95
---------	------------------



TDZ/CL Rws 8R, 8L, 15R, 26R, 26L, 27 and 33L					
HIRL all Rws					
FAF to MAP 5.8 NM					
Knots	60	90	120	150	180
Min:Seq	5:48	3:52	2:54	2:19	1:56

SC-5, 23 JAN 2025 to 20 FEB 2025

SC-5, 23 JAN 2025 to 20 FEB 2025