

LOC/DME I-GHI <b>110.9</b> Chan <b>46</b>	APP CRS <b>267°</b>	Rwy Idg <b>10000</b> TDZE <b>86</b> Apt Elev <b>96</b>
---	------------------------	--

# ILS or LOC RWY 27

GEORGE BUSH INTCNL/HOUSTON (IAH)

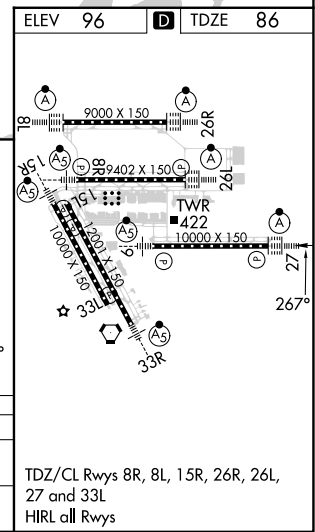
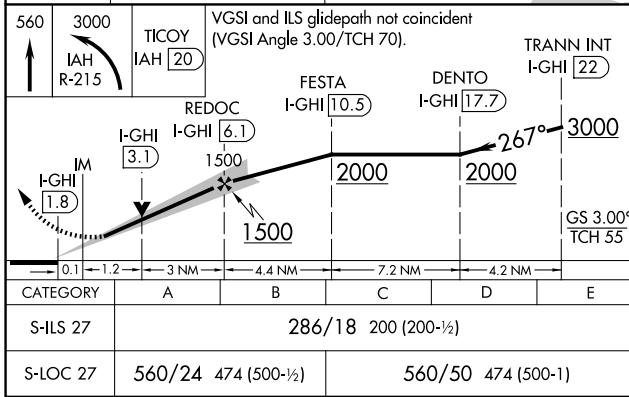
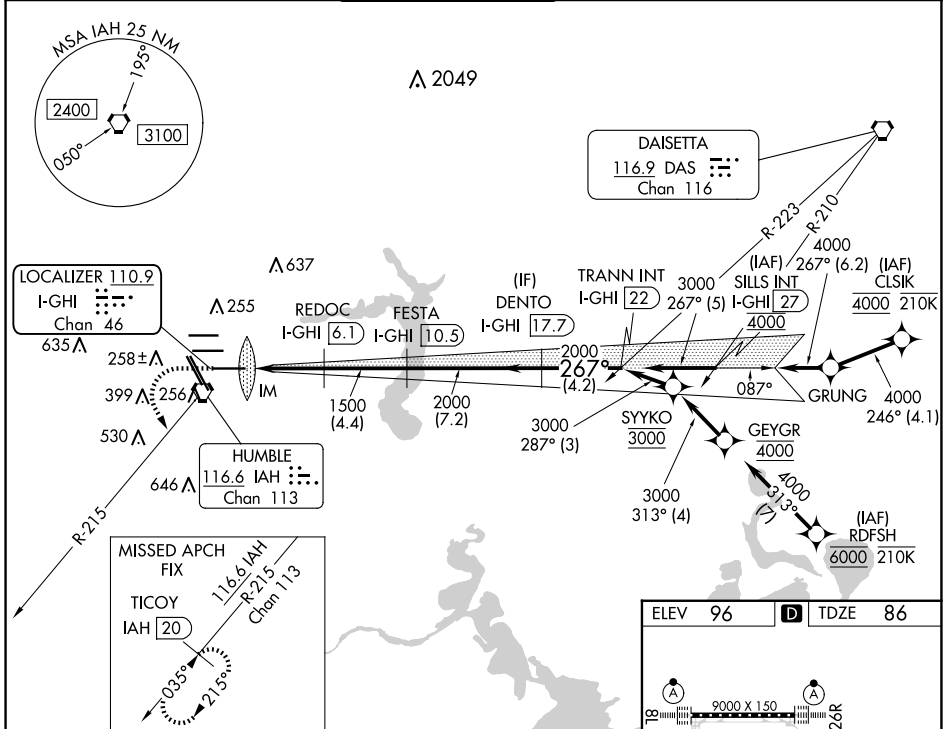
RNAV 1-GPS or RADAR required for procedure entry.  
DME required.

Simultaneous approach authorized. Use of FD or AP required during simultaneous operations. For inop ALS, increase S-ILS 27 Cat E visibility to RVR 4000 and S-LOC 27 Cat C-E visibility to 1 1/8 SM.

ALSF-2

MISSED APPROACH: Climb to 560 then climbing left turn to 3000 on IAH VORTAC R-215 to TICOY/IAH 20 DME and hold.

D-ATIS <b>124.05</b>	HOUSTON APP CON <b>120.05 379.1</b> EAST <b>124.35 316.15</b> WEST	HOUSTON TOWER <b>135.15 290.2</b>	GND CON <b>118.575</b>	CLNC DEL <b>128.1</b>	CPDLC
-------------------------	--	--------------------------------------	---------------------------	--------------------------	-------



SC-5, 23 JAN 2025 to 20 FEB 2025

SC-5, 23 JAN 2025 to 20 FEB 2025