

LOC/DME I-BZU <b>111.55</b> Chan 52 (Y)	APP CRS <b>087°</b>	Rwy Idg TDZE Apt Elev	<b>9000</b> <b>94</b> <b>96</b>
---	------------------------	-----------------------------	---------------------------------------

# ILS or LOC RWY 8L

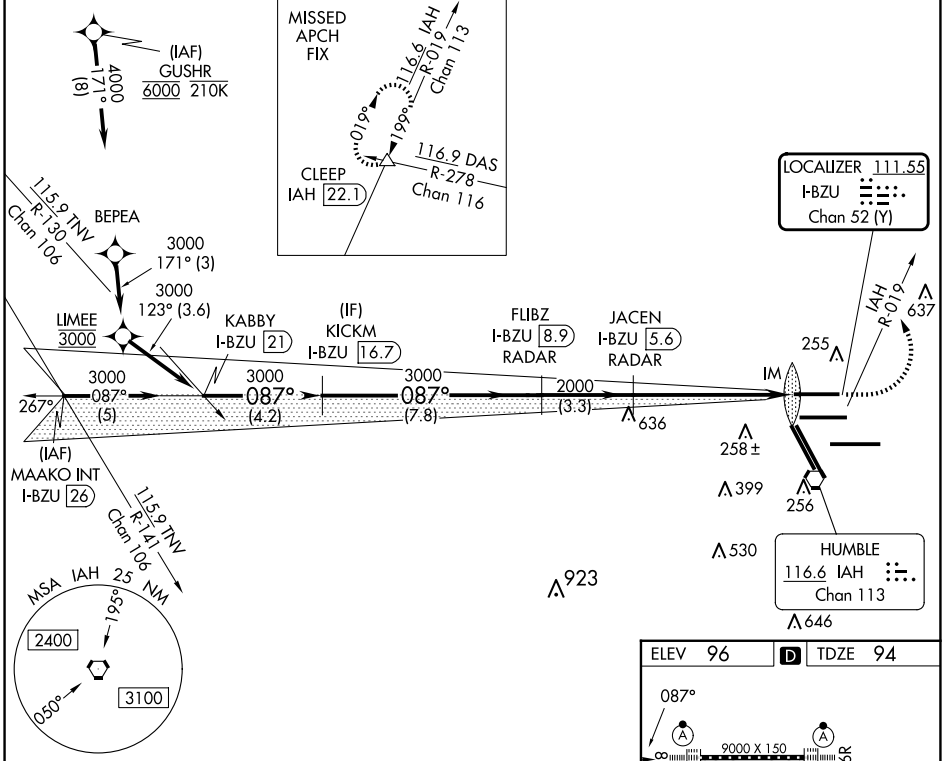
GEORGE BUSH INTCNTL/HOUSTON (IAH)

DME required. From GUSHR: RNAV 1-GPS required.

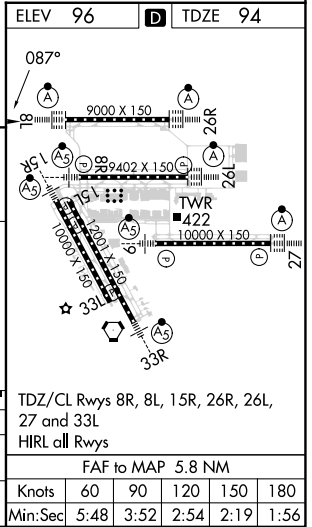
**Simultaneous approach authorized with Rwy 8R and Rwy 9.**

ALSF-2 MISSED APPROACH: Climb to 600 then climbing left turn to 4000 on IAH VORTAC R-019 to CLEEP INT/IAH 22.1 DME and hold.

ATIS <b>124.05</b>	HOUSTON APP CON <b>120.05 379.1</b> EAST <b>124.35 316.15</b> WEST	HOUSTON TOWER <b>120.725 290.2</b>	GND CON <b>118.575</b>	CLNC DEL <b>128.1</b>	CPDLC
-----------------------	--	---------------------------------------	---------------------------	--------------------------	-------



	* LOC only		600	4000	CLEEP
KABBY I-BZU [21]	KICKM I-BZU [16.7]	FLIBZ I-BZU [8.9] RADAR	JACEN I-BZU [5.6] RADAR	I-BZU DME ANTENNA	CLEEP
3000 087°		3000		2000	IM
GS 3.00° TCH 59		2000		I-BZU [1.2]	I-BZU [0.2]
4.2 NM		7.8 NM		1.3	0.1
CATEGORY	A	B	C	D	E
S-ILS 8L	294/18		200 (200-½)		
S-LOC 8L	600/24	506 (600-½)		600/55 506 (600-1)	



SC-5, 23 JAN 2025 to 20 FEB 2025

SC-5, 23 JAN 2025 to 20 FEB 2025