

HOUSTON, TEXAS

AL-5461 (FAA)

24305

LOC/DME I-IAH 109.7 Chan 34	APP CRS 087°	Rwy Idg 9402 TDZE 95 Apt Elev 96
---	------------------------	---

ILS or LOC RWY 8R

GEORGE BUSH INTCNL/HOUSTON (IAH)

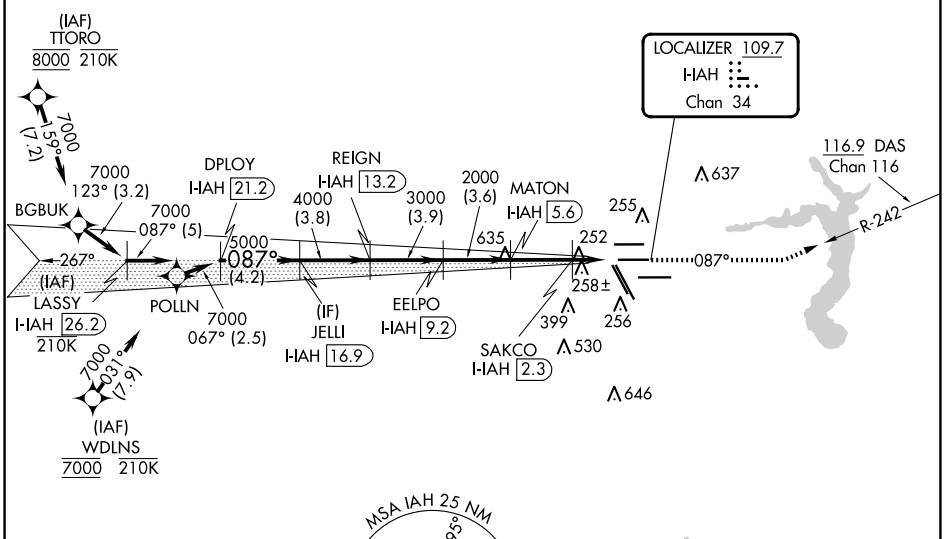
RNAV 1-GPS or RADAR required for procedure entry, DME.

Simultaneous approach authorized. For inop ALS, increase S-LOC 8R Cat C/D/E visibility to 1 $\frac{1}{2}$ SM. For inop ALS, increase S-ILS 8R Cat E visibility to RVR 4000.

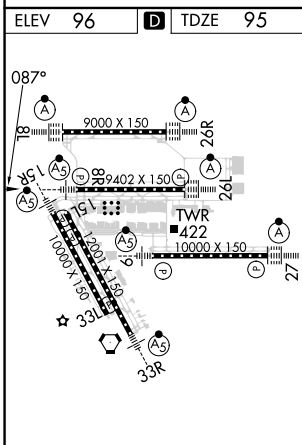
MALSR

MISSED APPROACH: Climb to 3000 on heading 087° and on DAS VORTAC R-242 to DAS VORTAC and hold.

D-ATIS 124.05	HOUSTON APP CON 120.05 379.1 EAST 124.35 316.15 WEST	HOUSTON TOWER 125.35 290.2	GND CON 118.575	CLNC DEL 128.1	CPDLC Δ 2049
-------------------------	--	--------------------------------------	---------------------------	--------------------------	------------------------



ELEV 96	D	TDZE 95
---------	----------	---------



TDZ/CL Rwy 8R, 8L, 15R, 26R, 26L, 27 and 33L
HIRL all Rwy



VGSi and ILS glidepath not coincident (VGSi Angle 3.00/TCH 72).							
LASSY I-IAH [26.2]	DPLY I-IAH [21.2]	JELLI I-IAH [16.9]	REIGN I-IAH [13.2]	EELPO I-IAH [9.2]	MATON I-IAH [5.6]	SAKCO I-IAH [2.3]	I-IAH DME ANTENNA [0.2]
7000	7000	5000	4000	3000	2000	2000	1000
GS 3.00°						*940	
TCH 55							
-5 NM		-4.2 NM		-3.8		-3.9	
				-3.6		-3.3 NM	
						-1.3 NM	
						-1.2 NM	
CATEGORY	A	B	C	D	E		
S-ILS 8R	295/18			200 (200- $\frac{1}{2}$)			
S-LOC 8R	560/24		465 (500- $\frac{1}{2}$)		560/50		465 (500-1)

HOUSTON, TEXAS
Amdt 26A 10OCT19

29°59'N-95°20'W

ILS or LOC RWY 8R

SC-5, 23 JAN 2025 to 20 FEB 2025

SC-5, 23 JAN 2025 to 20 FEB 2025