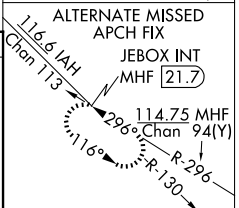
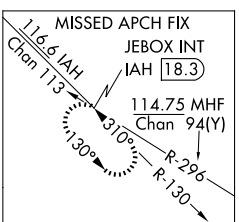
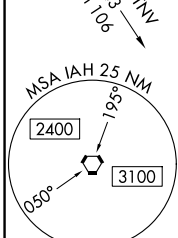
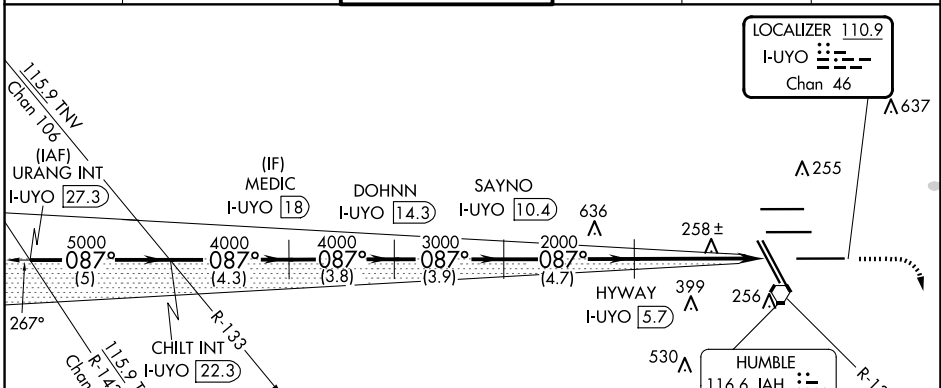


LOC/DME I-UYO 110.9 Chan 46	APP CRS 087°	Rwy Idg 10000 TDZE 90 Apt Elev 96
---	------------------------	--

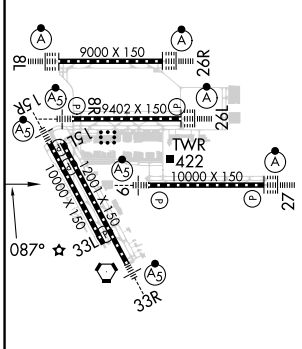
ILS or LOC RWY 9
GEORGE BUSH INTCNL/HOUSTON (IAH)

DME required. RADAR required for procedure entry.	MALSR 	MISSED APPROACH: Climb to 580 then climbing right turn to 3000 on IAH VORTAC R-130 to JEBOX/IAH 18.3 DME and hold.
Simultaneous approach authorized with Rwy 8L/R. # RVR 1800 authorized with the use of FD or AP or HUD to DA.		

D-ATIS 124.05	HOUSTON APP CON 120.05 379.1 EAST 124.35 316.15 WEST	HOUSTON TOWER 135.15 290.2	GND CON 118.575	CLNC DEL 128.1	CPDLC
-------------------------	--	--------------------------------------	---------------------------	--------------------------	-------

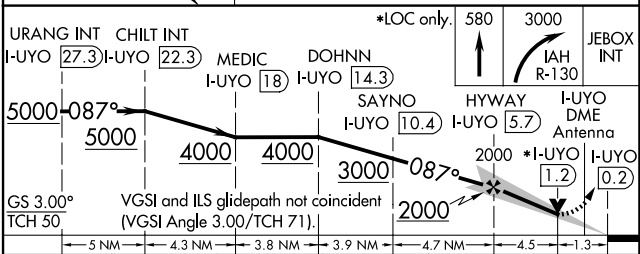


ELEV 96	D	TDZE 90
---------	----------	---------



TDZ/CL Rws 8R, 8L, 15R, 26R, 26L, 27 and 33L
HIRL all Rws

FAF to MAP 5.8 NM					
Knots	60	90	120	150	180
Min:Sec	5:48	3:52	2:54	2:19	1:56



CATEGORY	A	B	C	D	E
S-ILS 9 #	290/24 200 (200-1/2)				
S-LOC 9	580/24 490 (500-1/2)		580/50 490 (500-1)		

SC-5, 23 JAN 2025 to 20 FEB 2025

SC-5, 23 JAN 2025 to 20 FEB 2025