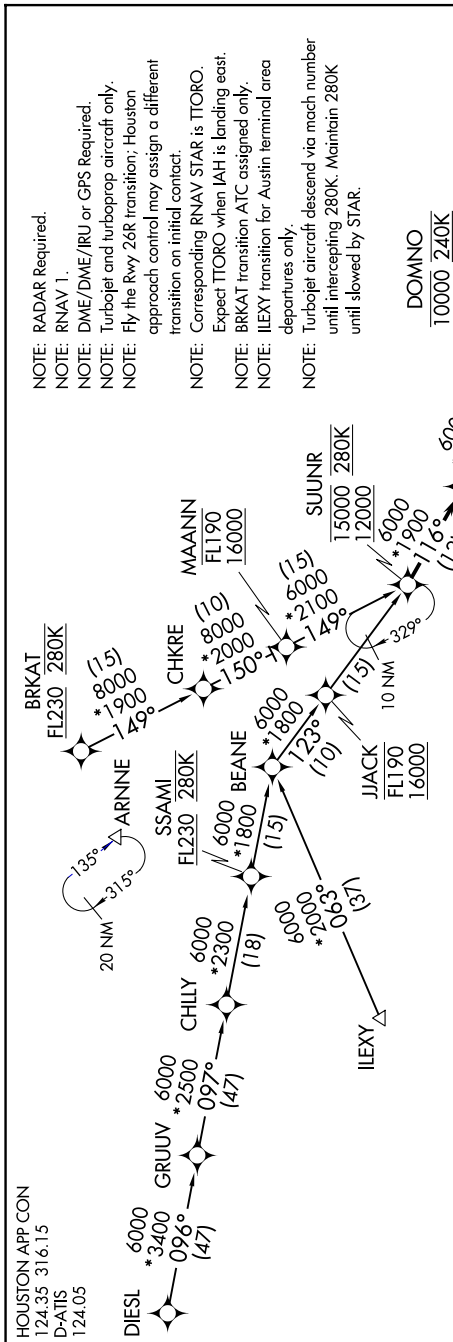


SC-5, 23 JAN 2025 to 20 FEB 2025



HOUSTON APP CON  
124.35 316.15  
D-ATIS  
124.05

- NOTE: RADAR Required.
- NOTE: RNAV 1.
- NOTE: DME/DME/IRU or GPS Required.
- NOTE: Turboprop and turboprop aircraft only.
- NOTE: Fly the Rwy 26R transition; Houston approach control may assign a different transition on initial contact.
- NOTE: Corresponding RNAV STAR is ITORO.
- NOTE: Expect ITORO when IAH is landing east.
- NOTE: BRKAT transition ATC assigned only.
- NOTE: ILEXY transition for Austin terminal area departures only.
- NOTE: Turboprop aircraft descend via mach number until intercepting 280K. Maintain 280K until slowed by STAR.

**ARRIVAL ROUTE DESCRIPTION**

BRKAT TRANSITION (BRKAT.MSCOT4):  
CHILY TRANSITION (CHILY.MSCOT4):  
DIESEL TRANSITION (DIESEL.MSCOT4):  
ILEXY TRANSITION (ILEXY.MSCOT4):

From SUUNR on track 116° to cross MSCOT at 10000, then on track 116° to HWKII, then on track 116° to cross DOMNO between 8000 and 10000 and at 240K.

**LANDING RUNWAY 26L:** From DOMNO on track 087° to cross ZOEFE at 7000 and at 210K, then on track 087°. Expect vectors to final approach course.

**LANDING RUNWAY 26R:** From DOMNO on track 087° to cross SKLER at 6000 and at 210K, then on track 087°. Expect vectors to final approach course.

**LANDING RUNWAY 27:** From DOMNO on track 136° to cross BYSUN at 6000, then on track 136° to SMOCR, then on track 087° to cross PRAYY at 6000 and at 210K, then on track 087°. Expect vectors to final approach course.

NOTE: Chart not to scale.

SC-5, 23 JAN 2025 to 20 FEB 2025