

APP CRS	Rwy Idg	<b>9402</b>
<b>267°</b>	TDZE	<b>95</b>
	Apt Elev	<b>96</b>

# RNAV (RNP) Y RWY 26L

GEORGE BUSH INTCNL/HOUSTON (IAH)

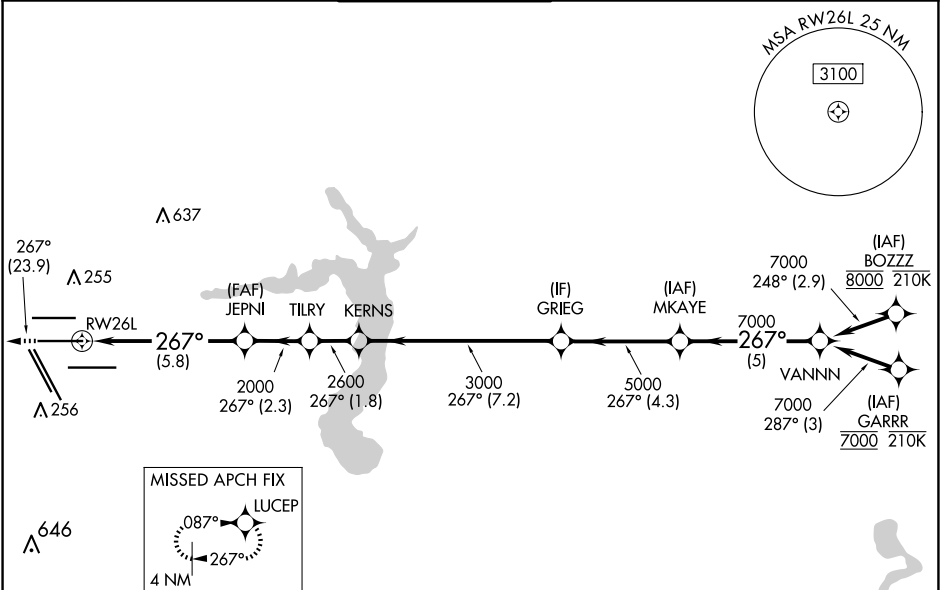
RNP AR APCH - GPS.

⚠ For uncompensated Baro-VNAV systems, procedure NA below -3°C or above 54°C. Simultaneous approach authorized. For inop ALS, increase RNP 0.13 all Cats visibility to RVR 5100, and RNP 0.30 all Cats visibility to 1½ SM.

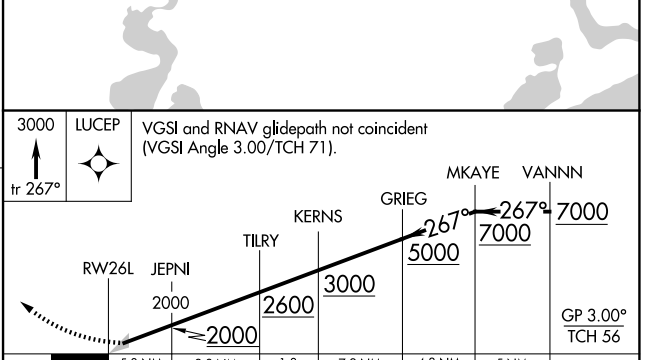
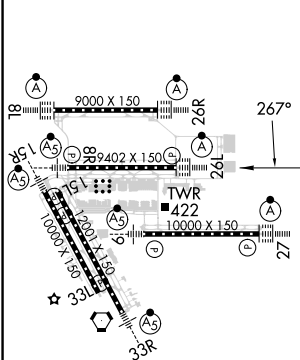
ALSF-2

MISSED APPROACH: Climb to 3000 on track 267° to LUCEP and hold.

D-ATIS <b>124.05</b>	HOUSTON APP CON <b>120.05 379.1 EAST</b> <b>124.35 316.15 WEST</b>	HOUSTON TOWER <b>125.35 290.2</b>	GND CON <b>118.575</b>	CLNC DEL <b>128.1</b>	CPDLC
-------------------------	--	--------------------------------------	---------------------------	--------------------------	-------



ELEV 96	<b>D</b>	TDZE 95
---------	----------	---------



CATEGORY	A	B	C	D
RNP 0.13 DA		414/40	319 (400-¾)	
RNP 0.30 DA		549/55	454 (500-1)	

**AUTHORIZATION REQUIRED**

SC-5, 23 JAN 2025 to 20 FEB 2025

SC-5, 23 JAN 2025 to 20 FEB 2025