

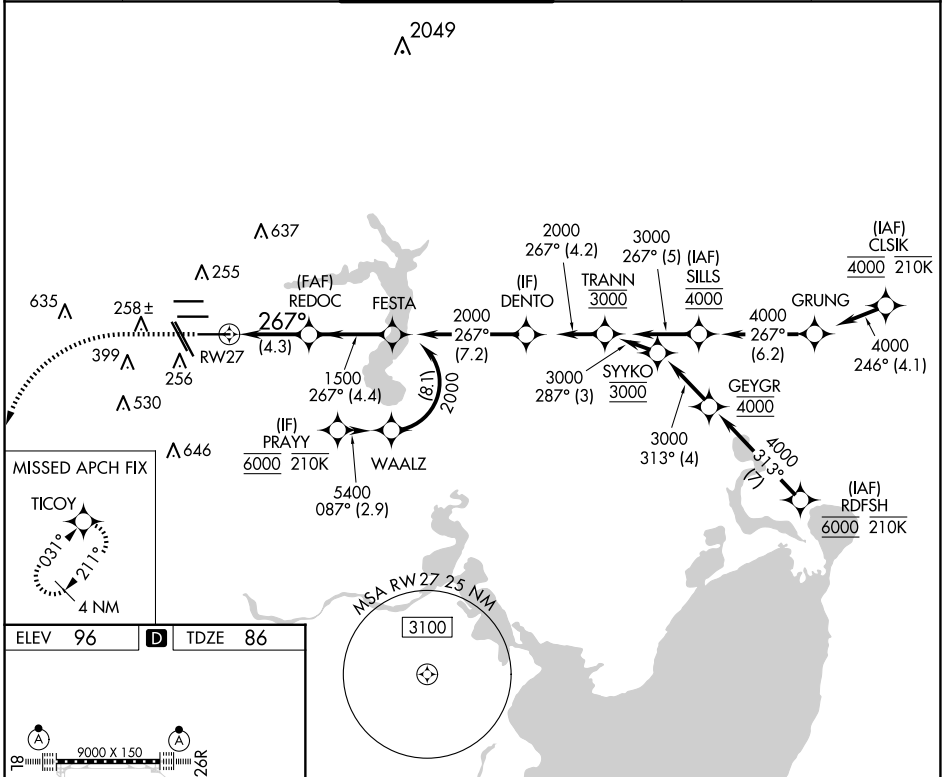
APP CRS	Rwy Idg	10000
267°	TDZE	86
	Apt Elev	96

RNAV (RNP) Y RWY 27

GEORGE BUSH INTCNTL/HOUSTON (IAH)

RNP AR APCH - GPS.		ALSf-2	MISSED APPROACH: Climb to 560 then climbing left turn to 3000 direct TICOY and hold.		
Simultaneous approach authorized. Use of FD or AP required during simultaneous operations. For uncompensated Baro-VNAV systems, procedure NA below -2°C or above 54°C. For inop ALS, increase RNP 0.30 all Cats visibility to RVR 4500.					

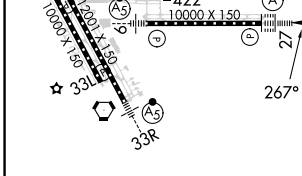
D-ATIS	HOUSTON APP CON	HOUSTON TOWER	GND CON	CLNC DEL	CPDLC
124.05	120.05 379.1 EAST 124.35 316.15 WEST	135.15 290.2	118.575	128.1	



SC-5, 23 JAN 2025 to 20 FEB 2025

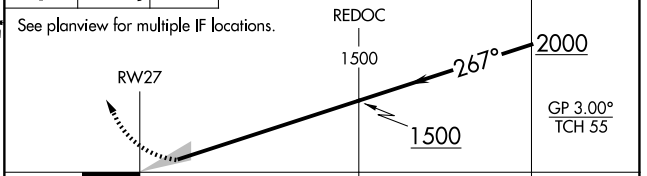
SC-5, 23 JAN 2025 to 20 FEB 2025

ELEV 96	D	TDZE 86
---------	----------	---------



560 3000 TICOY

VGSi and RNAV glidepath not coincident (VGSi Angle 3.00/TCH 70).



TDZ/CL Rwy 8L, 8R, 15R, 26R, 26L, 27 and 33L

HIRL all Rwy

CATEGORY	A	B	C	D
RNP 0.30 DA	380/24		294 (300-1/2)	

AUTHORIZATION REQUIRED