

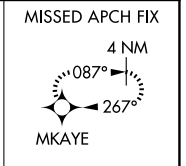
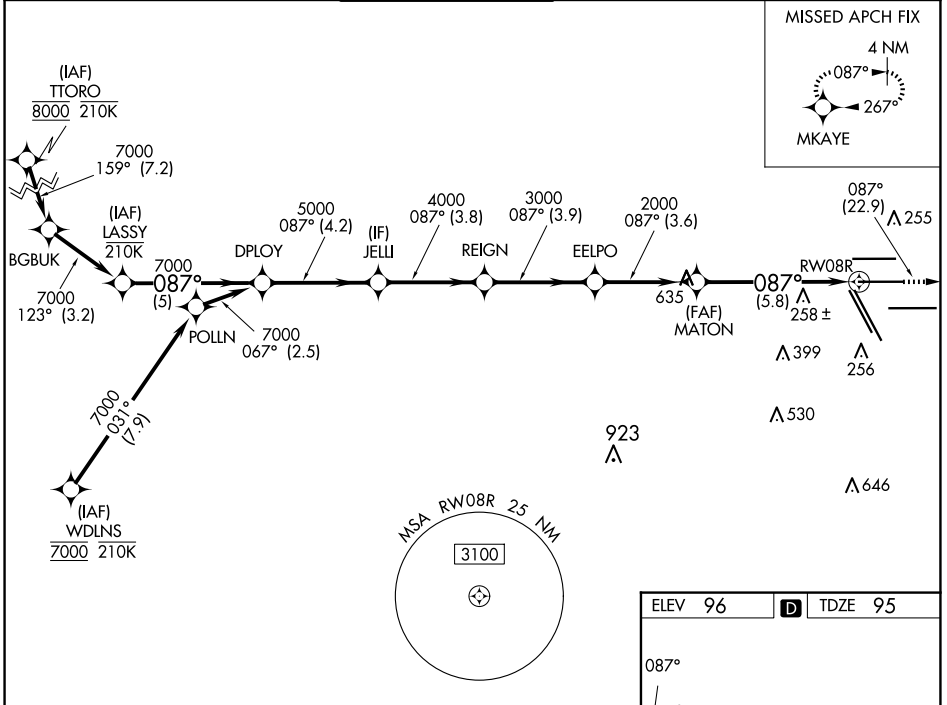
APP CRS	Rwy Idg	<b>9402</b>
<b>087°</b>	TDZE	<b>95</b>
	Apt Elev	<b>96</b>

# RNAV (RNP) Y RWY 8R

GEORGE BUSH INTCNL/HOUSTON (IAH)

<b>RNP AR APCH.</b> For uncompensated Baro-VNAV systems, procedure NA below -3°C or above 54°C. For inop ALS increase RNP 0.13 all Cats visibility to RVR 4500, RNP 0.14 all Cats visibility to RVR 5600, RNP 0.30 all Cats visibility to 1¼ SM. Simultaneous approach authorized.		MALSR 	MISSED APPROACH: Climb to 3000 on track 087° to MKAYE and hold.
---	--	-----------	---

D-ATIS <b>124.05</b>	HOUSTON APP CON <b>120.05 379.1 EAST</b> <b>124.35 316.15 WEST</b>	HOUSTON TOWER <b>125.35 290.2</b>	GND CON <b>118.575</b>	CLNC DEL <b>128.1</b>	CPDLC
-------------------------	--	--------------------------------------	---------------------------	--------------------------	-------



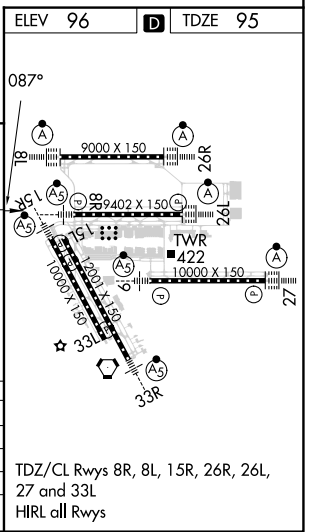
SC-5, 23 JAN 2025 to 20 FEB 2025

SC-5, 23 JAN 2025 to 20 FEB 2025

VGSI and RNAV glidepath not coincident (VGSI Angle 3.00/TCH 72).

LASSY	DPLOY	JELLI	REIGN	EELPO	MATON	RWY 8R
7000	7000	5000	4000	3000	2000	2000
GP 3.00° TCH 55						
-5 NM		4.2 NM	3.8	3.9	3.6	5.8 NM
CATEGORY	A	B	C	D		
RNP 0.13 DA		383/40	288 (300-¾)			
RNP 0.14 DA		441/40	346 (400-¾)			
RNP 0.30 DA		492/45	397 (400-¾)			

**AUTHORIZATION REQUIRED**



TDZ/CL Rwy 8R, 8L, 15R, 26R, 26L, 27 and 33L  
HIRL all Rwy's