

WAAS CH <b>49226</b> <b>W26D</b>	APP CRS <b>267°</b>	Rwy Idg TDZE <b>95</b> Apt Elev <b>96</b>	<b>9402</b>
--	------------------------	---	-------------

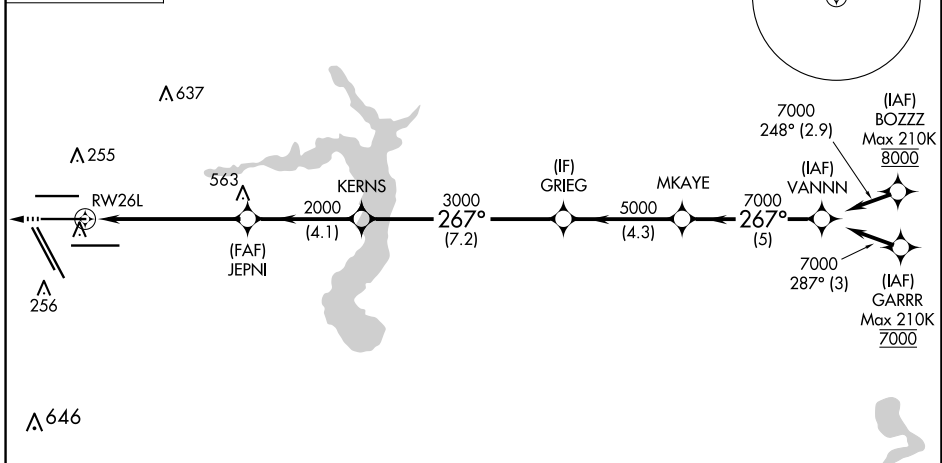
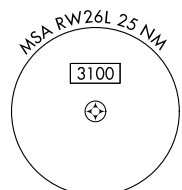
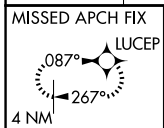
# RNAV (GPS) Z RWY 26L

GEORGE BUSH INTCNL/HOUSTON (IAH)

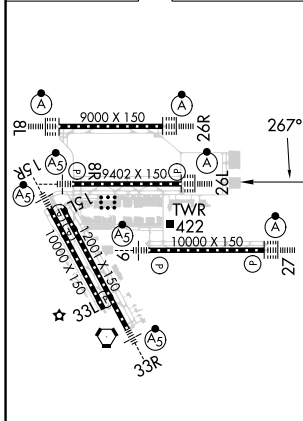
▼ For uncompensated Baro-VNAV systems, LNAV/VNAV NA below -3°C (27°F) or above 54°C (130°F). For inop ALSF, increase LPV Cat E visibility to RVR 4000, LNAV/VNAV Cat E visibility to 1½, and LNAV Cat E visibility to 1¾. DME/DME RNP-0.3 NA. Simultaneous approach authorized with Rwy 26R and Rwy 27. LNAV procedure NA during simultaneous operations. Use of FD or AP providing RNAV track guidance required during simultaneous operations.

ALSF-2  
MISSED APPROACH:  
Climb to 3000 direct  
LUCEP and hold.

D-ATIS <b>124.05</b>	HOUSTON APP CON <b>120.05 379.1 EAST</b> <b>124.35 316.15 WEST</b>	HOUSTON TOWER <b>125.35 290.2</b>	GND CON <b>118.575</b>	CLNC DEL <b>128.1</b>	CPDLC
-------------------------	--	--------------------------------------	---------------------------	--------------------------	-------

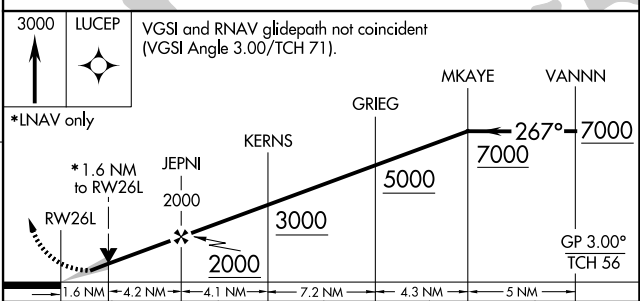


ELEV <b>96</b>	<b>D</b>	TDZE <b>95</b>
----------------	----------	----------------



TDZ/CL Rws 8R, 8L, 15R, 26R, 26L, 27 and 33L  
HIRL all Rws

## RADAR REQUIRED



CATEGORY	A	B	C	D	E
LPV DA		295/18	200 (200-½)		
LNAV/VNAV DA		586/60	491 (500-1¼)		
LNAV MDA	680/24	585 (600-½)	680-1¼	585 (600-1¼)	

SC-5, 23 JAN 2025 to 20 FEB 2025

SC-5, 23 JAN 2025 to 20 FEB 2025