

WAAS CH <b>69626</b> <b>W27A</b>	APP CRS <b>267°</b>	Rwy Idg <b>10000</b> TDZE <b>86</b> Apt Elev <b>96</b>
--	------------------------	--

# RNAV (GPS) Z RWY 27

GEORGE BUSH INTCNL/HOUSTON (IAH)

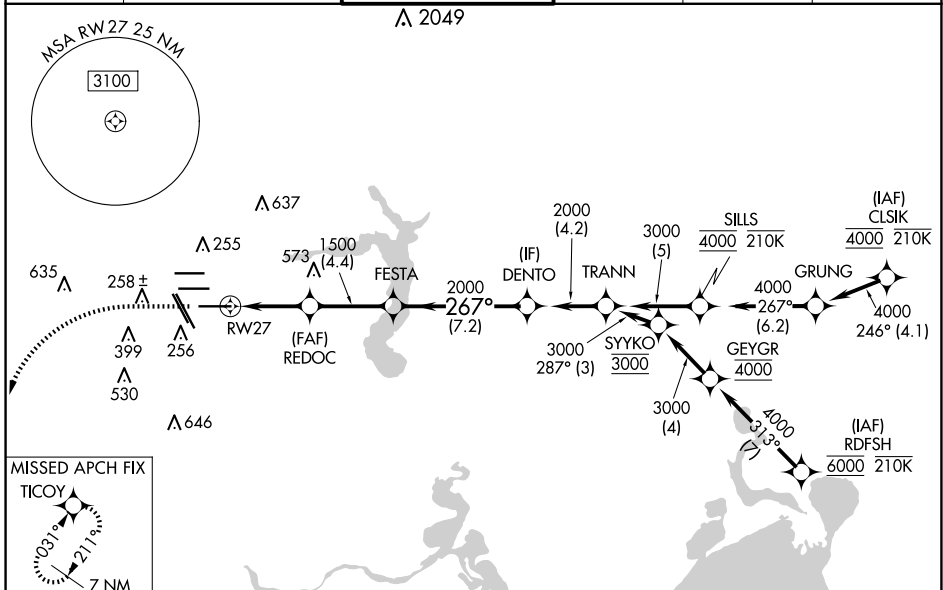
RNP APCH.

Simultaneous approach authorized. LNAV procedure NA during simultaneous operations. Use of FD or AP required during simultaneous operations. For uncompensated Baro-VNAV systems, LNAV/VNAV NA below -2°C or above 54°C. For inop ALS, increase LPV Cat E visibility to RVR 4000, LNAV/VNAV Cat E visibility to RVR 6000, and LNAV Cats C, D and E visibility to 1 $\frac{3}{8}$  SM.

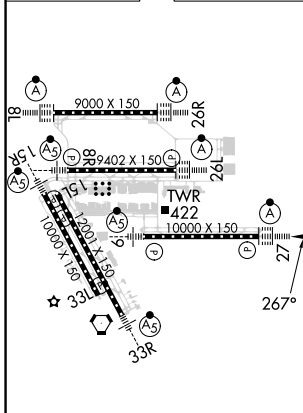


MISSED APPROACH: Climb to 560 then climbing left turn to 3100 direct TICOY and hold.

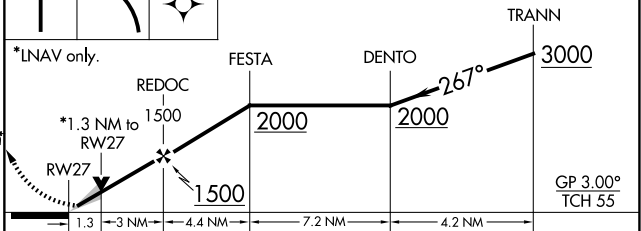
D-ATIS <b>124.05</b>	HOUSTON APP CON <b>120.05 379.1 EAST</b> <b>124.35 316.15 WEST</b>	HOUSTON TOWER <b>135.15 290.2</b>	GND CON <b>118.575</b>	CLNC DEL <b>128.1</b>	CPDLC
-------------------------	--	--------------------------------------	---------------------------	--------------------------	-------



ELEV 96	<b>D</b>	TDZE 86
---------	----------	---------



560 3100 TICOY VGSI and RNAV glidepath not coincident (VGSI Angle 3.00/TCH 70).



CATEGORY	A	B	C	D	E
LPV DA	286/18		200 (200- $\frac{1}{2}$ )		
LNAV/VNAV DA	476/35		390 (400- $\frac{5}{8}$ )		
LNAV MDA	560/24	474 (500- $\frac{1}{2}$ )	560/50		474 (500-1)

TDZ/CL Rwy 8R, 8L, 15R, 26R, 26L, 27 and 33L  
HIRL all Rwy

SC-5, 23 JAN 2025 to 20 FEB 2025

SC-5, 23 JAN 2025 to 20 FEB 2025