

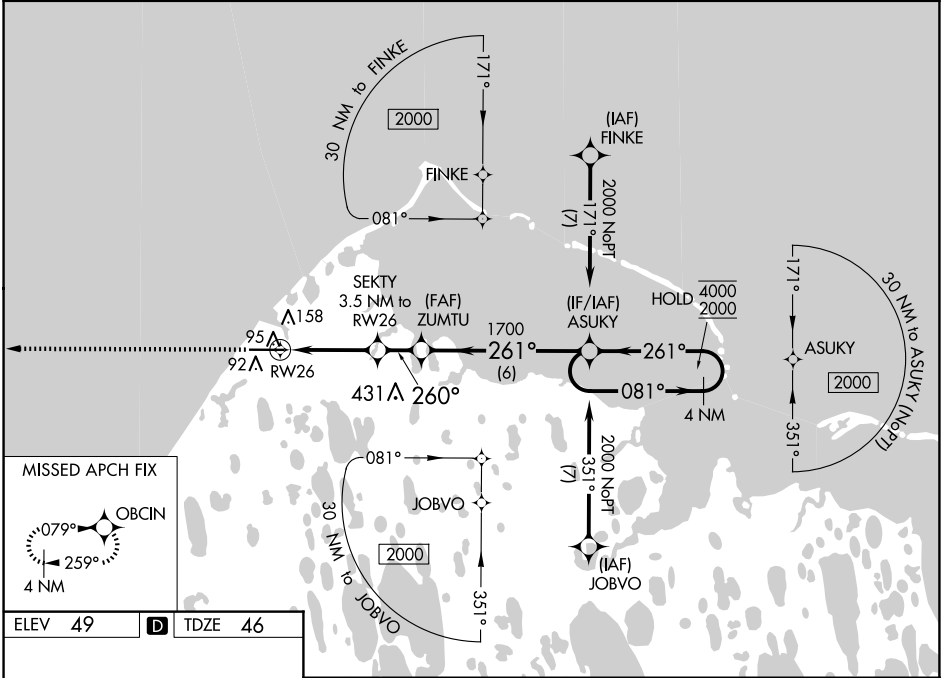
WAAS CH <b>73041</b> <b>W26A</b>	APP CRS <b>260°</b>	Rwy Idg TDZE <b>46</b> Apt Elev <b>49</b>	<b>5900</b>
--	------------------------	---	-------------

# RNAV (GPS) RWY 26

WILEY POST-WILL ROGERS MEML (BRW)(PABR)

RNP APCH - GPS.	MISSED APPROACH: Climb to 2000 direct OBCIN and hold.
<p>▼ For uncompensated Baro-VNAV systems, LNAV/VNAV                  ▲ NA below -19°C or above 54°C. Circling NA for Cat A north of Rwy 8-26</p>	

AFIS <b>132.15</b>	ANCHORAGE CENTER <b>135.3 239.25</b>	BARROW RADIO <b>123.6 (CTAF) 0</b>
-----------------------	---	---------------------------------------



ELEV 49 **D** TDZE 46

MISSED APCH FIX

OBCIN

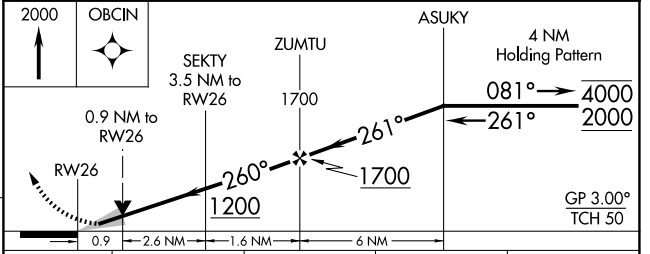
079°

259°

4 NM

REIL Rwy 26 0

HIRL Rwy 8-26 0



CATEGORY	A	B	C	D
LPV DA		246-1	200 (200-1)	
LNAV/VNAV DA		296-1	250 (300-1)	
LNAV MDA		360-1	314 (400-1)	
<b>C</b> CIRCLING	420-1 371 (400-1)	500-1 451 (500-1)	500-1½ 451 (500-1½)	680-2 631 (700-2)

AK, 26 DEC 2024 to 20 FEB 2025

AK, 26 DEC 2024 to 20 FEB 2025