

APP CRS	Rwy Idg	4800
227°	TDZE	666
	Apt Elev	666

RNAV (GPS) RWY 23

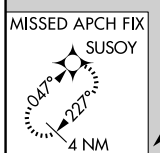
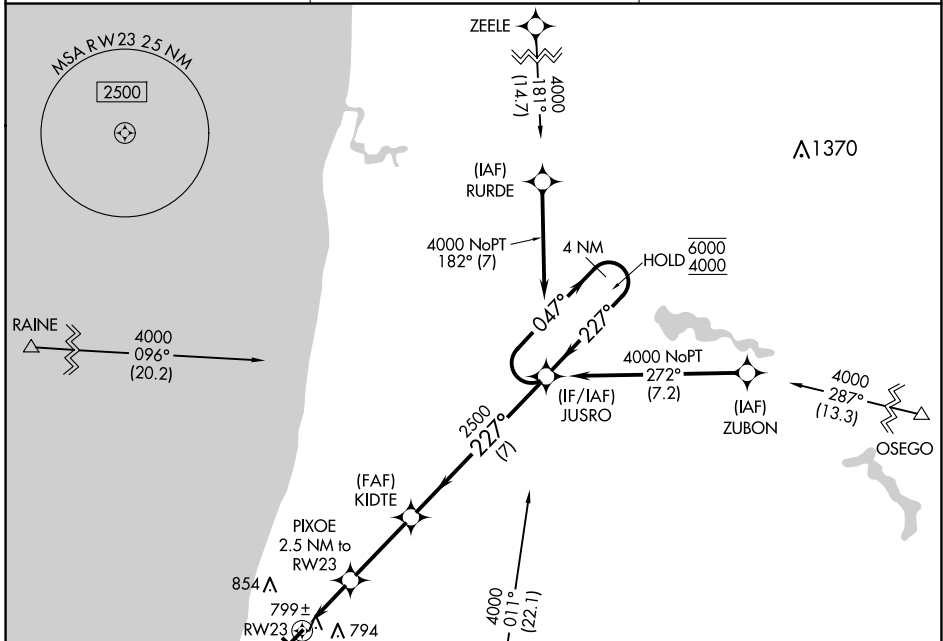
SOUTH HAVEN AREA RGNL (LWA)

RNP APCH - GPS.

▼ Rwy 23 helicopter visibility reduction below 3/4 SM NA.
▲ Circling NA to Rwy 14 and 32.

MISSED APPROACH: Climb to 4000 direct SUSOY and hold, continue climb-in-hold to 4000.

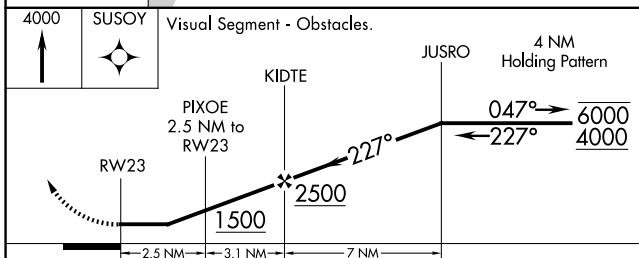
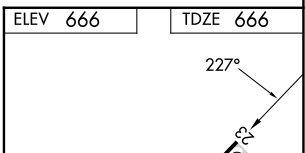
AWOS-3 118.025	SOUTH BEND APP CON ★ 118.55 257.8	UNICOM 122.8 (CTAF) 0
--------------------------	---	---------------------------------



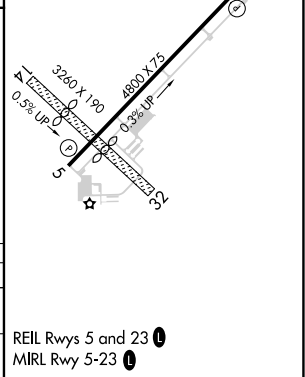
Visual Segment - Obstacles.

Procedure NA for arrival on ELX VOR/DME airway radial 002.

KEELER ELX



CATEGORY	A	B	C	D
LNVA MDA	1060-1	394 (400-1)	1060-1 1/8	394 (400-1 1/8)
C CIRCLING	1120-1 454 (500-1)	1160-1 494 (500-1)	1440-2 1/4 774 (800-2 1/4)	1440-2 1/2 774 (800-2 1/2)



EC-1, 23 JAN 2025 to 20 FEB 2025

EC-1, 23 JAN 2025 to 20 FEB 2025