

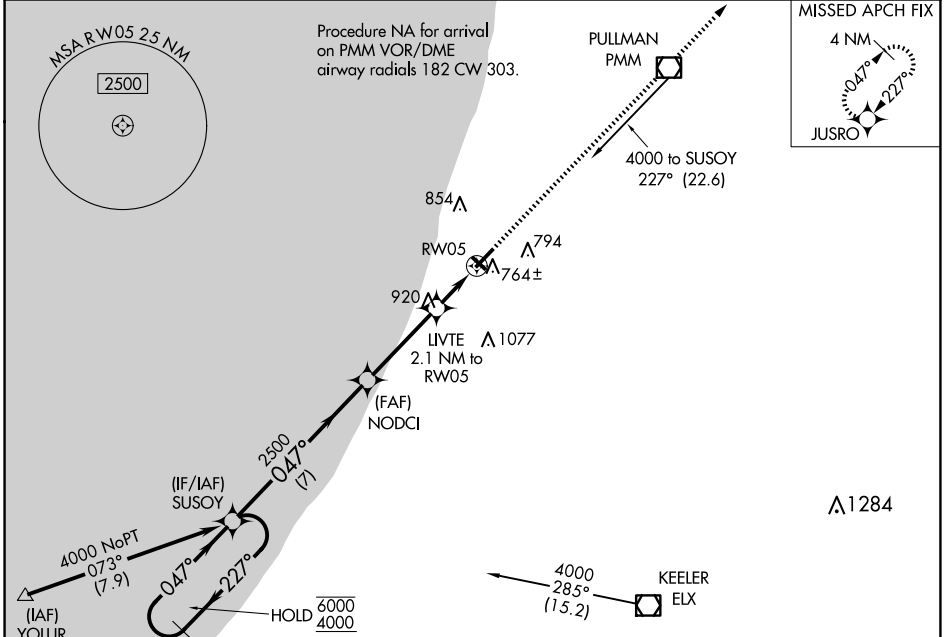
APP CRS	Rwy Idg	<b>4800</b>
<b>047°</b>	TDZE	<b>659</b>
	Apt Elev	<b>666</b>

# RNAV (GPS) RWY 5

SOUTH HAVEN AREA RGNL (LWA)

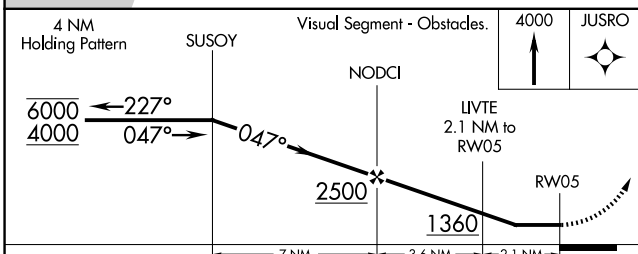
RNP APCH - GPS.	MISSED APPROACH: Climb to 4000 direct JUSRO and hold, continue climb-in-hold to 4000.
▼ Rwy 5 helicopter visibility reduction below 3/4 SM NA. ▲ Circling NA to Rwys 14 and 32.	

AWOS-3 <b>118.025</b>	SOUTH BEND APP CON* <b>118.55 257.8</b>	UNICOM <b>122.8 (CTAF)</b>
--------------------------	--	-------------------------------

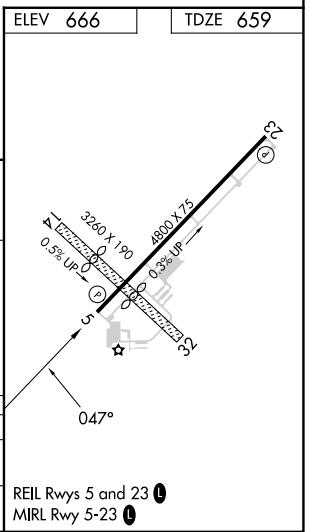


ELEV 666	TDZE 659
----------	----------

Procedure NA for arrival on ELX VOR/DME airway radials 271 CW 002.



CATEGORY	A	B	C	D
LNAV MDA	1020-1 361 (400-1)			
CIRCLING	1120-1 454 (500-1)	1160-1 494 (500-1)	1440-2 1/4 774 (800-2 1/4)	1440-2 1/2 774 (800-2 1/2)



EC-1, 23 JAN 2025 to 20 FEB 2025

EC-1, 23 JAN 2025 to 20 FEB 2025