

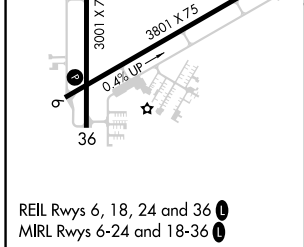
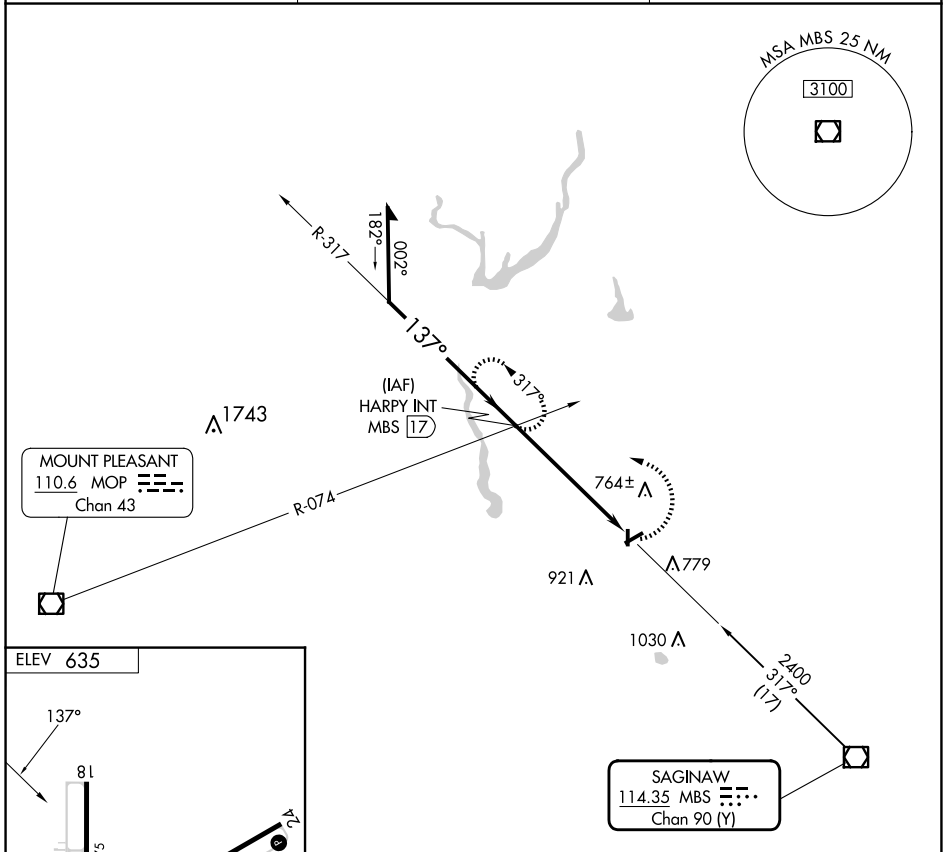
VOR/DME MBS 114.35 Chan 90 (Y)	APP CRS 137°	Rwy Idg TDZE Apt Elev 635	N/A N/A 635
--	------------------------	--	--

VOR-A
JACK BARSTOW (IKW)

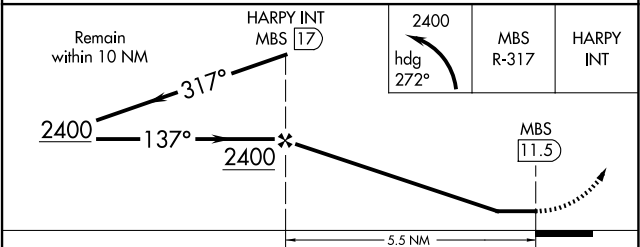
⚠ When local altimeter setting not received, use MBS Intl altimeter setting and increase all MDA 40 feet. Circling Rwy 18, 36 NA at night.
Rwy 18, 36 helicopter visibility reduction below 1 SM NA.

MISSED APPROACH: Climbing left turn to 2400 via heading 272° and MBS VOR/DME R-317 to HARRY INT/17 DME and hold.

AWOS-3 119.525	GREAT LAKES APP CON ★ 126.45 235.625	UNICOM 122.8 (CTAF) 0
--------------------------	--	---------------------------------



ELEV 635	REIL Rwys 6, 18, 24 and 36 0	MIRL Rwys 6-24 and 18-36 0
FAF to MAP 5.5 NM	CATEGORY	
Knots	A	B
Min:Sec	1140-1	505 (600-1)
	C	D
	1240-1¾	605 (700-1¾)
		NA



EC-1, 23 JAN 2025 to 20 FEB 2025

EC-1, 23 JAN 2025 to 20 FEB 2025