

(HHOWE4.HHOWE) 24137

HHOWE FOUR DEPARTURE (RNAV)

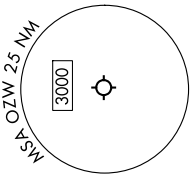
LIVINGSTON COUNTY SPENCER J HARDY (OZW)
AL-5485 (FAA)
HOWELL, MICHIGAN

EC-1, 23 JAN 2025 to 20 FEB 2025

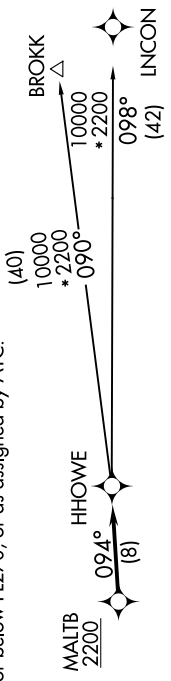
**TOP ALTITUDE:
ASSIGNED BY ATC**

RNAV-1 DME/DME/IRU or GPS.
RADAR required.

DETROIT DEP CON
132.35 284.0
AWOS-3
118.875
CUNC DEL
121.725
CTAF
123.0



NOTE: Turbojet departures at/above 10000, maintain 280K until advised by ATC.
NOTE: BROKK TRANSITION: For use by flights filed at or below FL270, or as assigned by ATC.



TAKEOFF MINIMUMS:
Rwy 13, 31: Standard.

NOTE: Chart not to scale.

DEPARTURE ROUTE DESCRIPTION

TAKEOFF RUNWAY 13: Climb on heading 132° or as assigned by ATC, thence....
TAKEOFF RUNWAY 31: Climb on heading 312° or as assigned by ATC, thence....
....for RADAR vectors to cross MALTB at or above 2200, then on track 094° to HHOWE, then on (transition).
Maintain ATC assigned altitude, expect filed altitude 10 minutes after departure.

BROKK TRANSITION (HHOWE4, BROKK):
INCON TRANSITION (HHOWE4, INCON):

HHOWE FOUR DEPARTURE (RNAV)

(HHOWE4.HHOWE) 16MAY24

HOWELL, MICHIGAN
LIVINGSTON COUNTY SPENCER J HARDY (OZW)

EC-1, 23 JAN 2025 to 20 FEB 2025