

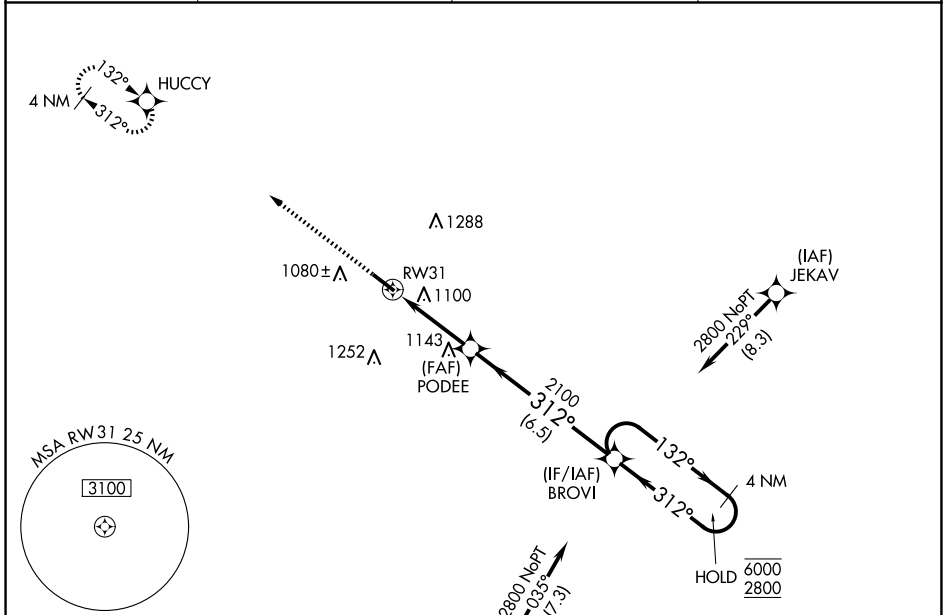
WAAS CH 99722 W31A	APP CRS 312°	Rwy Idg 5002 TDZE 943 Apt Elev 962
--	------------------------	---

RNAV (GPS) RWY 31

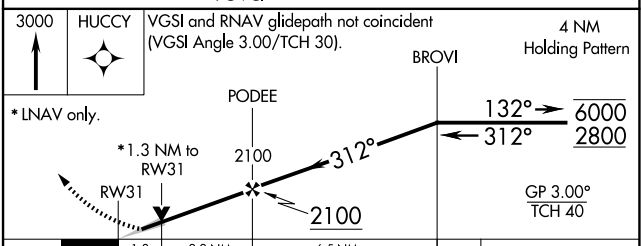
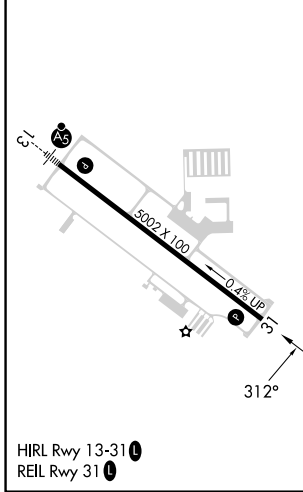
LIVINGSTON COUNTY SPENCER J HARDY (OZW)

RNP APCH.		MISSED APPROACH: Climb to 3000 direct HUCCY and hold.	
For uncompensated Baro-VNAV systems, LNAV/VNAV NA below -16°C or above 54°C.			

AWOS-3 118.875	DETROIT APP CON 132.35 284.0	CLNC DEL 121.725 (GCO)	UNICOM 123.0 (CTAF) 0
--------------------------	--	----------------------------------	---------------------------------



ELEV 962	TDZE 943
----------	----------



CATEGORY	A	B	C	D
LPV DA		1143- ³ / ₄	200 (200- ³ / ₄)	
LNAV/VNAV DA		1410-1 ⁵ / ₈	467 (500-1 ⁵ / ₈)	
LNAV MDA	1400-1	457 (500-1)	1400-1 ³ / ₈	457 (500-1 ³ / ₈)
CIRCLING	1400-1 438 (500-1)	1420-1 458 (500-1)	1600-1 ³ / ₄ 638 (700-1 ³ / ₄)	1600-2 638 (700-2)

EC-1, 23 JAN 2025 to 20 FEB 2025

EC-1, 23 JAN 2025 to 20 FEB 2025