

(TRMML4.TRMML) 24137

TRMML FOUR DEPARTURE (RNAV)

LIVINGSTON COUNTY SPENCER J HARDY (OZW)

AL-5485 (FAA)

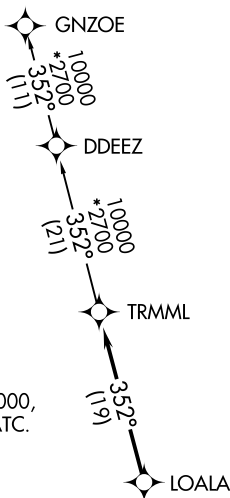
HOWELL, MICHIGAN

**TOP ALTITUDE:
ASSIGNED BY ATC**

RNAV 1 - DME/DME/IRU or GPS.

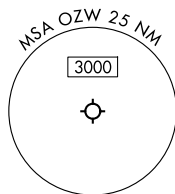
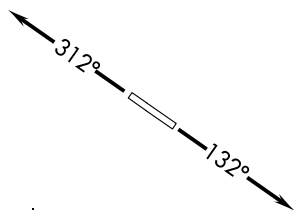
RADAR required.

DETROIT DEP CON
132.35 284.0
AWOS-3
118.875
CLNC DEL
121.725
CTAF
123.0



TAKEOFF MINIMUMS:
Rwys 13, 31: Standard.

NOTE: Turbojet departures at/above 10000,
maintain 280K until advised by ATC.



NOTE: Chart not to scale.

DEPARTURE ROUTE DESCRIPTION

TAKEOFF RUNWAY 13: Climb on heading 132° or as assigned by ATC,
thence....

TAKEOFF RUNWAY 31: Climb on heading 312° or as assigned by ATC,
thence....

....for RADAR vectors to LOALA, then on track 352° to TRMML, then on (transition).
Maintain ATC assigned altitude, expect filed altitude 10 minutes after departure.

GNZOE TRANSITION (TRMML4.GNZOE):

TRMML FOUR DEPARTURE (RNAV)

(TRMML4.TRMML) 16MAY24

HOWELL, MICHIGAN

LIVINGSTON COUNTY SPENCER J HARDY (OZW)

EC-1, 23 JAN 2025 to 20 FEB 2025

EC-1, 23 JAN 2025 to 20 FEB 2025