

APP CRS	Rwy Idg	N/A
050°	TDZE	N/A
	Apt Elev	926

# RNAV (GPS)-A

OAKLAND SOUTHWEST (Y47)

RNP APCH - GPS.

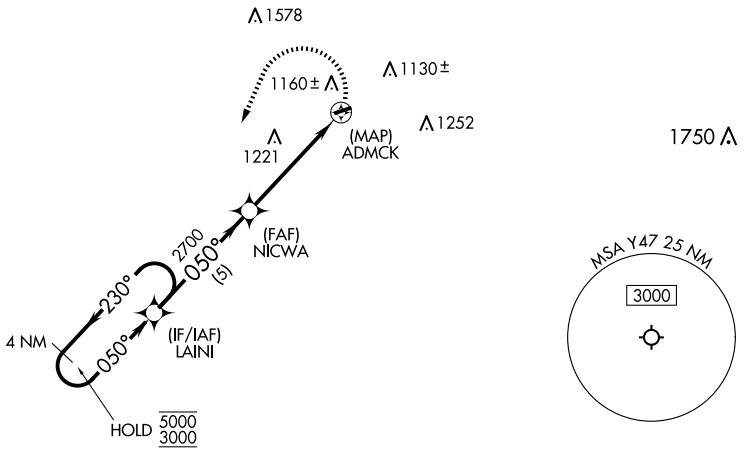
**⚠** Procedure NA at night. Rwy 8 and 26 helicopter visibility reduction below 1 SM NA. Use Detroit Willow Run altimeter setting.

**MISSED APPROACH:** Climbing left turn to 3000 direct LAINI and hold.

YIP ASOS  
**127.425**

DETROIT APP CON  
**132.35 284.0**

UNICOM  
**122.7 (CTAF) 0**

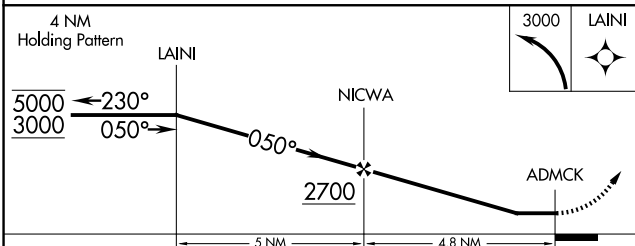
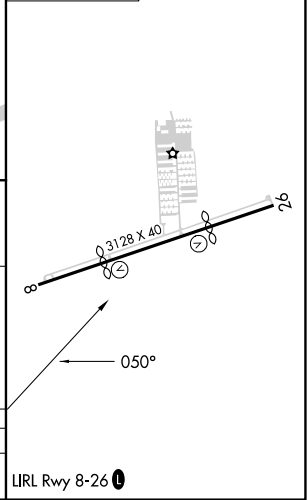


EC-1, 23 JAN 2025 to 20 FEB 2025

EC-1, 23 JAN 2025 to 20 FEB 2025



ELEV 926



CATEGORY	A	B	C	D
CIRCLING	1540-1 614 (700-1)	1580-1 654 (700-1)	NA	

LIRL Rwy 8-26 **0**