

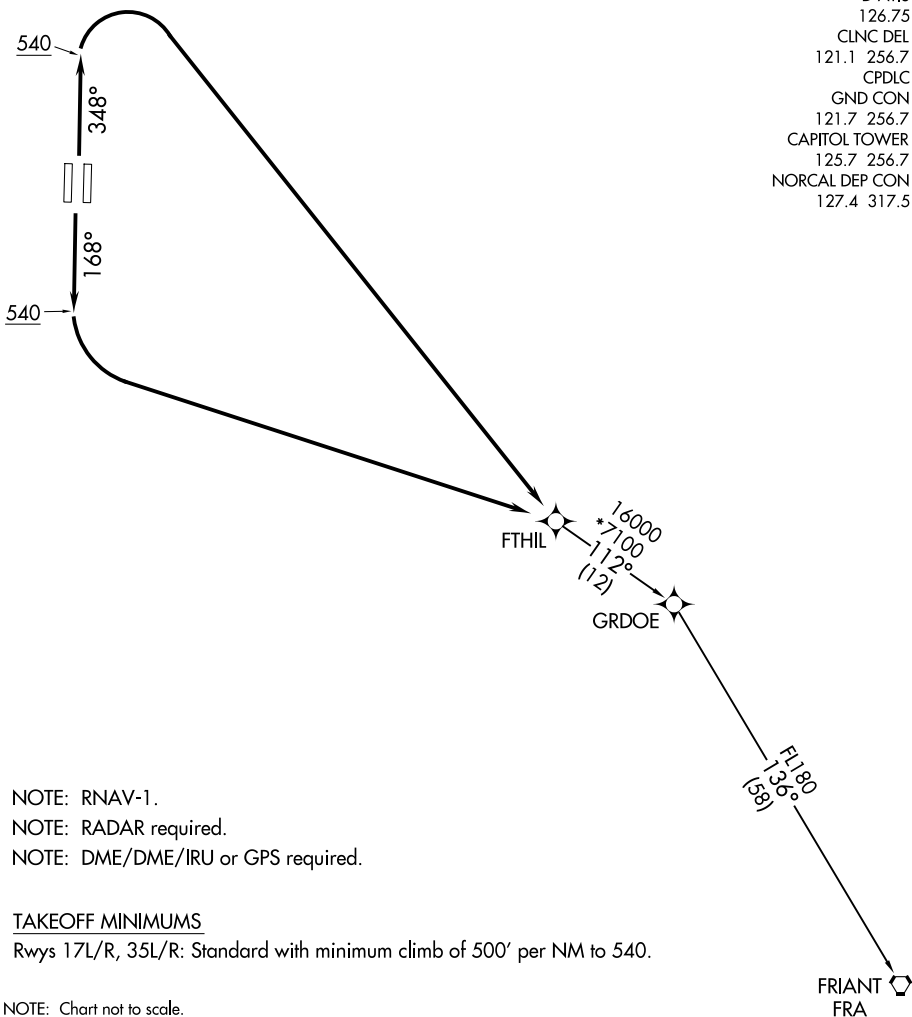
(FTHIL3.FTHIL) 20142

FTHIL THREE DEPARTURE(RNAV)

AL-5490 (FAA)

SACRAMENTO INTL (SMF)
SACRAMENTO, CALIFORNIA

D-ATIS
126.75
CLNC DEL
121.1 256.7
CPDLC
GND CON
121.7 256.7
CAPITOL TOWER
125.7 256.7
NORCAL DEP CON
127.4 317.5



SW-2, 23 JAN 2025 to 20 FEB 2025

SW-2, 23 JAN 2025 to 20 FEB 2025

- NOTE: RNAV-1.
- NOTE: RADAR required.
- NOTE: DME/DME/IRU or GPS required.

TAKEOFF MINIMUMS

Rwys 17L/R, 35L/R: Standard with minimum climb of 500' per NM to 540.

NOTE: Chart not to scale.



DEPARTURE ROUTE DESCRIPTION

TAKEOFF RUNWAYS 17L/R: Climb on heading 168° to 540, then left turn direct FTHIL. Thence. . .

TAKEOFF RUNWAYS 35L/R: Climb on heading 348° to 540, then right turn direct FTHIL. Thence. . .

. . . on transition. Maintain FL190. Expect filed altitude 10 minutes after departure.

FRIANT TRANSITION (FTHIL3.FRA)

FTHIL THREE DEPARTURE(RNAV)

(FTHIL3.FTHIL) 21MAY20

SACRAMENTO, CALIFORNIA
SACRAMENTO INTL (SMF)