

LOC/DME I-SMF <b>111.1</b> Chan 48	APP CRS <b>168°</b>	Rwy ldg <b>8598</b> TDZE <b>25</b> Apt Elev <b>27</b>
--	------------------------	---

# ILS or LOC RWY 17R

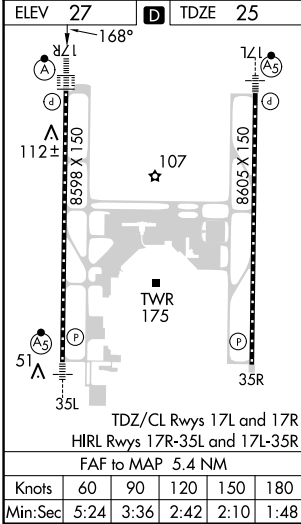
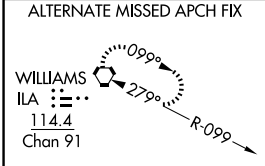
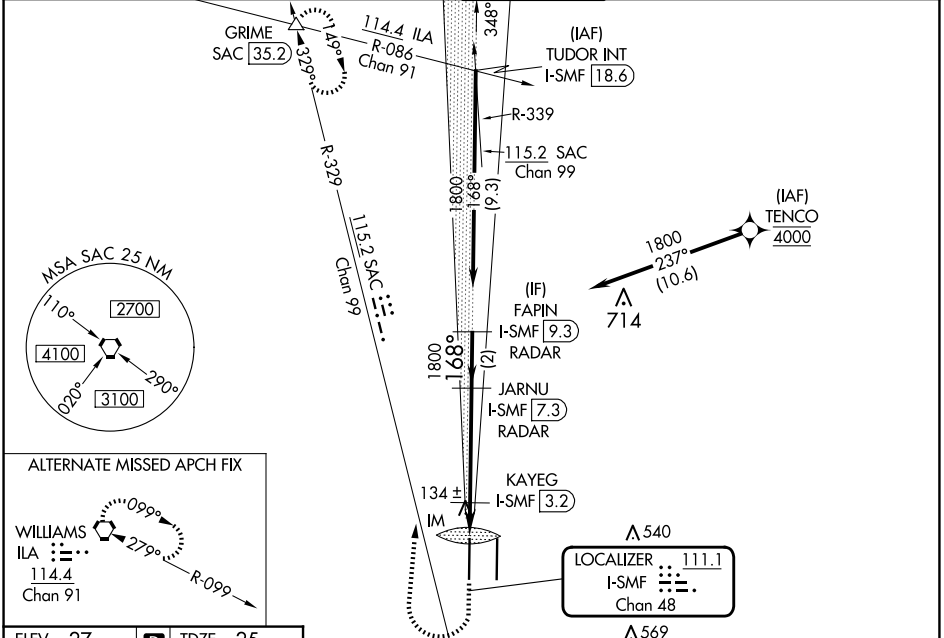
SACRAMENTO INTL (SMF)

Aircraft not GPS equipped - RADAR required for procedure entry.  
DME or RADAR required. RNP APCH-GPS. From TENCO.

Simultaneous approach authorized.  
Circling NA east of Rwy 17R-35L.

ALSIF-2  
MISSED APPROACH: Climb to 500 then climbing right turn to 2000 on heading 350° and SAC VORTAC R-329 to GRIME INT/SAC 35.2 DME and hold.

D-ATIS <b>126.75</b>	NORCAL APP CON <b>125.4 259.1 (W-NE) 125.25 257.9 (SW) 127.4 317.5 (E-SE)</b>	CAPITOL TOWER <b>125.7 256.7</b>	GND CON <b>121.7 256.7</b>	CLNC DEL <b>121.1 256.7</b>	CPDLC
-------------------------	--	-------------------------------------	-------------------------------	--------------------------------	-------



ELEV 27	TDZE 25	500	2000	SAC R-329	GRIME	VGSI and ILS glidepath not coincident (VGSI Angle 3.00/TCH 72).	
				JARNU I-SMF [7.3] RADAR	FAPIN I-SMF [9.3] RADAR		
CATEGORY	A	B	C	D			
S-ILS 17R	225/18		200 (200-1/2)				
S-LOC 17R	480/24	455 (500-1/2)		480/45	455 (500-7/8)		
CIRCLING	480-1	453 (500-1)		480-1 1/2	453 (500-1 1/2)		580-2
KAYEG FIX MINIMUMS (DME REQUIRED)							
S-LOC 17R	400/24	375 (400-1/2)		400/35	375 (400-5/8)		
CIRCLING	440-1	480-1		480-1 1/2	453 (500-1 1/2)		580-2
	413 (500-1)	453 (500-1)		453 (500-1 1/2)	553 (600-2)		

SW-2, 23 JAN 2025 to 20 FEB 2025

SW-2, 23 JAN 2025 to 20 FEB 2025