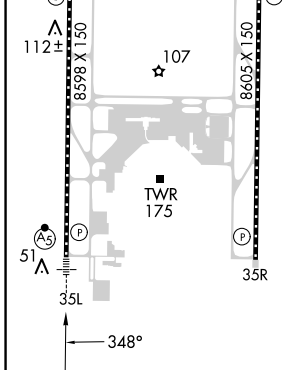
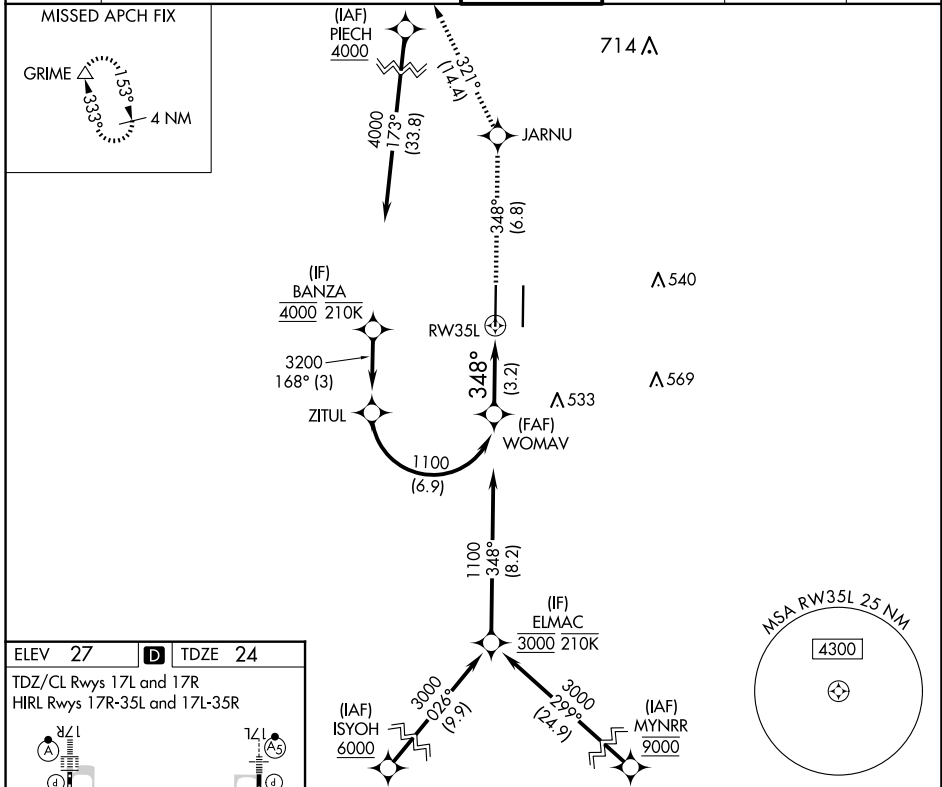


APP CRS	Rwy Idg	8598
348°	TDZE	24
	Apt Elev	27

RNAV (RNP) Z RWY 35L

SACRAMENTO INTL (SMF)

RNP AR APCH-GPS.		MALSR	MISSED APPROACH: Climb to 2000 on track 348° to JARNU and track 321° to GRIME and hold.		
▼ For uncompensated Baro-VNAV systems, procedure NA below -2°C or above 54°C. For inop ALS, increase RNP 0.12 all Cats visibility to RVR 4500; increase RNP 0.30 all Cats visibility to RVR 5500.					
D-ATIS	NORCAL APP CON	CAPITOL TOWER	GND CON	CLNC DEL	CPDLC
126.75	125.4 259.1 (W-NE) 125.25 257.9 (SW) 127.4 317.5 (E-SE)	125.7 256.7	121.7 256.7	121.1 256.7	



VGSIs and RNAV glidepath not coincident (VGSIs Angle 3.00/TCH 76).		2000	JARNU \diamond	GRIME \triangle
WOMAV		\uparrow tr 348°	tr 321°	
1100		See planview for multiple IF locations.		
GP 3.00°		RWY35L		
TCH 59		3.2 NM		
CATEGORY	A	B	C	D
RNP 0.12 DA		318/24	294 (300-1/2)	
RNP 0.30 DA		382/30	358 (400-5/8)	
AUTHORIZATION REQUIRED				

SW-2, 23 JAN 2025 to 20 FEB 2025

SW-2, 23 JAN 2025 to 20 FEB 2025