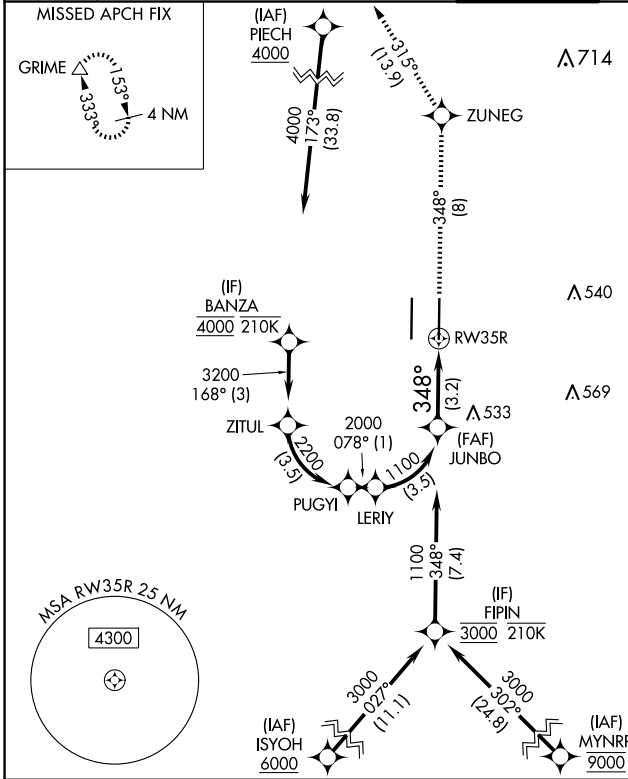


APP CRS 348°	Rwy Idg TDZE Apt Elev	8605 24 27
------------------------	-----------------------------	---------------------------------------

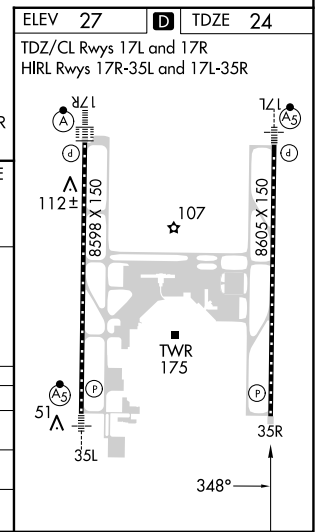
RNAV (RNP) Z RWY 35R

SACRAMENTO INTL (SMF)

RNP AR APCH-GPS.		MISSED APPROACH: Climb to 2000 on track 348° to ZUNEG and on track 315° to GRIME and hold.					
▼ For uncompensated Baro-VNAV systems, procedure NA below -2°C or above 54°C.		NORCAL APP CON		CAPITOL TOWER	GND CON	CLNC DEL	CPDLC
D-ATIS 126.75	125.4 259.1 (W-NE)	125.25 257.9 (SW)	127.4 317.5 (E-SE)	125.7 256.7	121.7 256.7	121.1 256.7	



JUNBO	2000	ZUNEG	tr 315°	GRIME
1100	↑ tr 348°			
GP 3.00°				
TCH 64				
See planview for multiple IF locations.				
3.2 NM				
CATEGORY	A	B	C	D
RNP 0.10 DA		316/45	292 (300-7/8)	
RNP 0.30 DA		384/55	360 (400-1)	
AUTHORIZATION REQUIRED				



SW-2, 23 JAN 2025 to 20 FEB 2025

SW-2, 23 JAN 2025 to 20 FEB 2025