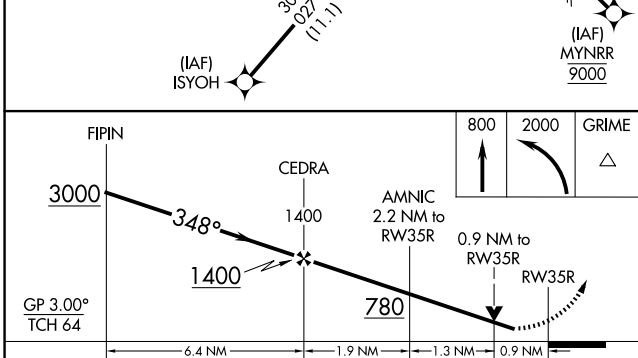
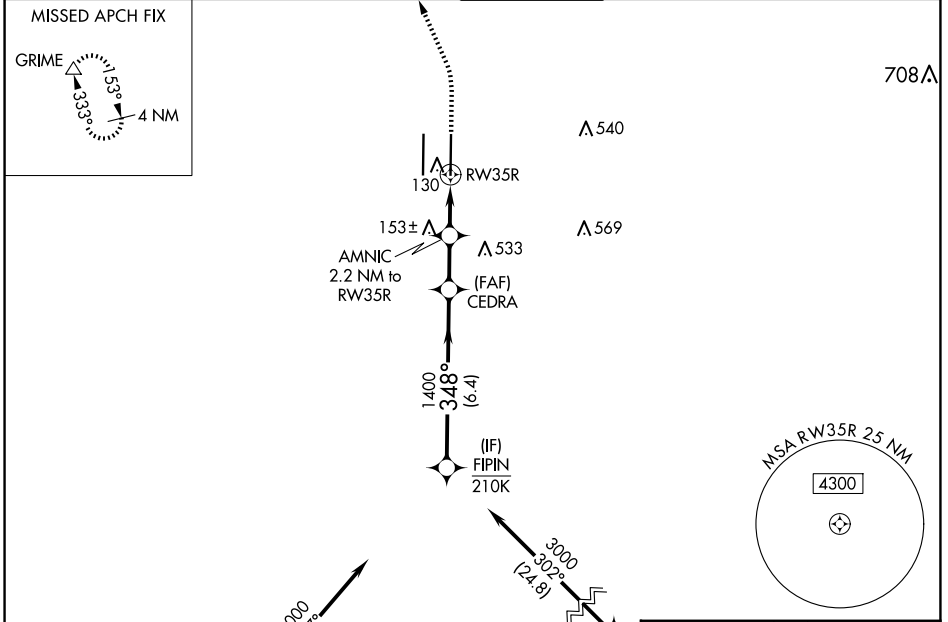


# RNAV (GPS) Y RWY 35R

SACRAMENTO INTL (SMF)

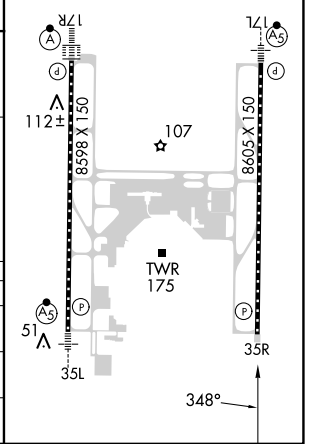
APP CRS	Rwy Idg	<b>8605</b>
<b>348°</b>	TDZE	<b>24</b>
	Apt Elev	<b>27</b>

RNP APCH-GPS.		MISSED APPROACH: Climb to 800 then climbing left turn to 2000 direct GRIME and hold.					
<p><b>▽</b> Circling NA west of Rwy 17L-35R. Rwy 35R helicopter visibility reduction below 3/4 SM NA. For uncompensated Baro-VNAV systems, LNAV/VNAV NA below -2°C or above 54°C.</p>		<p>NORCAL APP CON</p> <p><b>125.4 259.1 (W-NE) 125.25 257.9 (SW)</b></p> <p><b>127.4 317.5 (E-SE)</b></p>		<p><b>CAPITOL TOWER</b></p> <p><b>125.7 256.7</b></p>	<p>GND CON</p> <p><b>121.7 256.7</b></p>	<p>CLNC DEL</p> <p><b>121.1 256.7</b></p>	<p>CPDLC</p>



ELEV 27	<b>D</b> TDZE 24
---------	------------------

TDZ/CL Rwsy 17L and 17R  
HIRL Rwsy 17R-35L and 17L-35R



CATEGORY	A	B	C	D
LNAV/VNAV DA		311/45	287 (300-7%)	
LNAV MDA		380/55	356 (400-1)	
<b>C</b> CIRCLING	400-1 373 (400-1)	480-1 453 (500-1)	480-1 1/2 453 (500-1 1/2)	840-2 3/4 813 (900-2 3/4)

SW-2, 23 JAN 2025 to 20 FEB 2025

SW-2, 23 JAN 2025 to 20 FEB 2025